

UNIVERSITÄTSKLINIKUM HAMBURG-EPPENDORF

Zentrum für Experimentelle Medizin
Institut für Biochemie und Signaltransduktion

Direktor: Prof. Dr. rer. nat. Aymelt Itzen

High sensitivity of circulating tumor cells derived from a colorectal cancer patient for dual inhibition with AKT and mTOR inhibitors

Dissertation

zur Erlangung des Grades eines Doktors der Medizin
an der Medizinischen Fakultät der Universität Hamburg.

vorgelegt von:

Daniel Jan Smit
aus Amsterdam, Niederlande

Hamburg 2021

(wird von der Medizinischen Fakultät ausgefüllt)

**Angenommen von der
Medizinischen Fakultät der Universität Hamburg am: 10.01.2022**

**Veröffentlicht mit Genehmigung der
Medizinischen Fakultät der Universität Hamburg.**

Prüfungsausschuss, der/die Vorsitzende: Prof. Dr. Udo Schumacher

Prüfungsausschuss, zweite/r Gutachter/in: Prof. Dr. Manfred Jücker

Prüfungsausschuss, dritte/r Gutachter/in: Prof. Dr. Arnd Kieser

Inhaltsverzeichnis

1. MANUSKRIFT	4
1.1 ABSTRACT	4
1.2 KEYWORDS.....	4
1.3 INTRODUCTION.....	4
1.4 RESULTS	6
1.4.1 Strong activation of the PI3K/AKT/mTOR signaling pathway in CTC-MCC-41	6
1.4.2 Differential PI3K/AKT/mTOR signaling in suspension and adherent phenotype of CTC-MCC-41 cells	7
1.4.3 AKT isoform specific signaling in CTC-MCC-41 cells	9
1.5 DISCUSSION.....	10
1.6 MATERIALS AND METHODS	12
1.6.1 Standard cell culture.....	12
1.6.2 Stable AKT isoform specific knockdown	13
1.6.3 Proliferation assay and therapeutic drug sensitivity testing.....	13
1.6.4 Apoptosis assay	13
1.6.5 Western blot analysis and densitometric quantification.....	14
1.6.6 Calculation of combination indices	14
1.6.7 Statistical analysis	14
1.7 CONCLUSIONS	14
1.8 AUTHOR CONTRIBUTIONS.....	15
1.9 FUNDING.....	15
1.10 ACKNOWLEDGMENTS.....	15
1.11 CONFLICTS OF INTEREST	15
1.12 REFERENCES	15
1.13 SUPPLEMENTARY MATERIAL	20
2. LETTER OF ACCEPTANCE	22
3. DARSTELLUNG DER PUBLIKATION	23
3.1 EINLEITUNG	23
3.2 ERGEBNISSE.....	26
3.3 DISKUSSION.....	27
3.4 MATERIAL UND METHODEN	29
3.5 LITERATURVERZEICHNIS	30
3.6 ABKÜRZUNGSVERZEICHNIS	34
4. ZUSAMMENFASSUNG / SUMMARY	35
5. ERKLÄRUNG DES EIGENANTEILS AN DER PUBLIKATION	36
6. DANKSAGUNG	36
7. LEBENSLAUF	37
8. VOLLSTÄNDIGE PUBLIKATIONSLISTE	38
9. EIDESSTATTLICHE VERSICHERUNG	39

Article

High Sensitivity of Circulating Tumor Cells Derived from a Colorectal Cancer Patient for Dual Inhibition with AKT and mTOR Inhibitors

Daniel J. Smit ¹, Laure Cayrefourcq ², Marie-Therese Haider ³, Nico Hinz ¹, Klaus Pantel ⁴, Catherine Alix-Panabières ² and Manfred Jücker ^{1,*}

¹ Institute of Biochemistry and Signal Transduction, University Medical Center Hamburg-Eppendorf, Martinistraße 52, 20246 Hamburg, Germany; d.smit@uke.de (D.J.S.); hinz_nico@gmx.de (N.H.)

² Laboratory of Rare Human Circulating Cells (LCCRH), University Medical Center of Montpellier, 34093 Montpellier, France; l-cayrefourcq@chu-montpellier.fr (L.C.); c-panabieres@chu-montpellier.fr (C.A.-P.)

³ Molecular Skeletal Biology Laboratory, Department of Trauma, Hand and Reconstructive Surgery, University Medical Center Hamburg-Eppendorf, 20246 Hamburg, Germany; m.haider@uke.de

⁴ Department of Tumor Biology, University Medical Center Hamburg-Eppendorf, Martinistraße 52, 20246 Hamburg, Germany; pantel@uke.de

* Correspondence: juecker@uke.de; Tel.: +49-(0)-40-7410-56339

Received: 14 August 2020; Accepted: 18 September 2020; Published: 20 September 2020



Abstract: Circulating tumor cells (CTCs) are cells shed from the primary tumor into the bloodstream. While many studies on solid tumor cells exist, data on CTCs are scarce. The mortality of cancer is mostly associated with metastasis and recent research identified CTCs as initiators of metastasis. The PI3K/AKT/mTOR signaling pathway is an intracellular pathway that regulates essential functions including protein biosynthesis, cell growth, cell cycle control, survival and migration. Importantly, activating oncogenic mutations and amplifications in this pathway are frequently observed in a wide variety of cancer entities, underlining the significance of this signaling pathway. In this study, we analyzed the functional role of the PI3K/AKT/mTOR signaling pathway in the CTC-MCC-41 line, derived from a patient with metastatic colorectal cancer. One striking finding in our study was the strong sensitivity of this CTC line against AKT inhibition using MK2206 and mTOR inhibition using RAD001 within the nanomolar range. This suggests that therapies targeting AKT and mTOR could have been beneficial for the patient from which the CTC line was isolated. Additionally, a dual targeting approach of AKT/mTOR inside the PI3K/AKT/mTOR signaling pathway in the colorectal CTCs showed synergistic effects *in vitro*. Depending on the phenotypical behavior of CTC-MCC-41 in cell culture (adherent vs. suspension), we identified altered phosphorylation levels inside the PI3K/AKT/mTOR pathway. We observed a downregulation of the PI3K/AKT/mTOR signaling pathway, but not of the RAS/RAF/MAPK pathway, in CTCs growing in suspension in comparison to adherent CTCs. Our results highlight distinct functions of AKT isoforms in CTC-MCC-41 cells with respect to cell proliferation. Knockdown of AKT1 and AKT2 leads to significantly impaired proliferation of CTC-MCC-41 cells *in vitro*. Therefore, our data demonstrate that the PI3K/AKT/mTOR signaling pathway plays a key role in the proliferation of CTC-MCC-41.

Keywords: circulating tumor cells; CTCs; drug sensitivity assays; PI3K/AKT/mTOR pathway; AKT; MK2206; RAD001; dual targeting; colorectal carcinoma; targeted therapy; personalized medicine

1. Introduction

Most deaths in cancer are associated with metastasis of cells from the primary tumor [1]. During the metastatic process malignant cancer cells have the ability to access the lymphatic system, blood

vessels or surrounding tissue [2]. Although the importance of cancer cell metastasis has been shown in the past [3], the entire process is not completely understood yet.

Recently, circulating tumor cells (CTCs), which are shed from the primary tumor into the blood were successfully isolated and taken into cell culture, promising a valuable and robust model to study cancer cell metastasis [4,5]. The CTC cell culture allows insights into the cells responsible for metastasis and opens up a new field in the cancer research area. However, CTC isolation is still challenging due to the low number of cells in the patients' bloodstream [6,7]. Nevertheless, the possible clinical applications of CTCs are broad and include therapy monitoring [8–10], studies on resistance mechanisms [11–13], risk stratification for relapse [14–16] and potential targets for personalized medicine [17,18]. In some cancer entities, including pancreatic cancer, breast cancer and colorectal cancer, CTC counts are linked to an unfavorable prognosis [14,19,20], highlighting the impact of CTCs in disease progression.

Colorectal cancer (CRC) accounted for over one million cases and half a million death in 2018, making the disease the third most commonly diagnosed cancer entity worldwide [21]. Despite the extensive effort for early detection of CRC in developed countries [21], one out of five patients suffers from metastatic CRC at first diagnosis [22]. In colon cancer metastases can be frequently detected in different organs including the liver, lung, bone and brain. Treatment for metastatic colon cancer remains palliative and only around 14% of these patients survive the disease for more than five years after diagnosis [23].

In the past, the correlation of clinicopathological parameters and presence of CTCs could be established [24]. Furthermore, the presence of CTCs was linked to poor survival in a meta-analysis and CTCs were described as an independent prognosticator in CRC [25]. However, further characterization of CTCs is still limited by the low number of CTCs [26]. The recent establishment of cell lines from CTCs of cancer patients has therefore opened a new avenue for functional analyses of CTCs [4,27,28]. The CTC-MCC-41 colon CTC line that we analyzed in this study was the first long-term stable CTC line established from a patient with colon cancer. The CTC-MCC-41 line was derived from the blood sample of a 57-year-old male patient after first diagnosis prior to treatment of the metastatic colon cancer. In addition to various cancer infiltrated abdominal and mediastinal lymph nodes, the patient suffered from a solitary synchronous liver metastasis at first presentation.

The cell line features an intermediate epithelial-mesenchymal phenotype with stem cell-like characteristics and the ability to induce endothelial cell tube formation in vitro [4]. Genomic analysis of CTC-MCC-41 cells revealed that *PIK3CA*, *AKT*, *PTEN*, *KRAS* and *NRAS* were wild type, but the cell line harbors a *BRAF*^{V600E} mutation with a stable allele frequency of 50% [29]. The *BRAF*^{V600E} mutation detected in CTC-MCC-41 cells matches the mutational status of the primary tumor and the lymph node metastasis [4,29]. Notably, CTC-MCC-41 has the capacity to form xenograft tumors in mice after subcutaneous injection [4] with matching mutational profile underlining the tumorigenic potential of CTCs as reported in the past [30]. Moreover, in-depth transcriptional analysis has revealed that this CTC line has a distinct transcriptomic signature, not observed in established CRC lines (e.g., HT29) of other sources [4,31], suggesting that CTCs have unique properties that enable them to survive in the bloodstream.

The PI3K/AKT/mTOR signaling pathway not only plays a crucial role in physiologically cell biology, but also in cancer as it regulates cell proliferation, survival, migration, angiogenesis and the utilization of nutrition [32]. Disruption of the tightly regulated PI3K/AKT/mTOR signaling induced by genetic alternations in cancer leads to growth advantages and common cancer-associated patterns [33] such as accelerated cell growth without negative feedback, increased survival and metastatic potential [34]. Therefore, the PI3K/AKT/mTOR signaling pathway became a popular target for new drugs in cancer [35–37]. For full activation of AKT, phosphorylation at serine residue 473 is required [38]. Upon full activation, AKT further regulates various downstream substrates inside the PI3K/AKT/mTOR pathway [38,39]. In CRC, a phosphorylation at this site could be detected in nearly half of the CRC samples and was correlated with a poor disease outcome [40].

In the present study, we assessed the functional role of the PI3K/AKT/mTOR signaling pathway in the permanent CTC line CTC-MCC-41 [4]. Further understanding of the tumor cells that are said to initiate metastasis and their signaling is of high importance in order to develop new treatment strategies. Here, we report that the PI3K/AKT/mTOR signaling pathway, which is frequently hyperactivated in cancer, also exhibits an important role in CTCs and may be a valuable target for anti-cancer therapies. We demonstrate strong synergistic effects on the growth of CTCs in vitro by dual targeting AKT and mTOR with MK2206 [41] and RAD001 [42] within the nanomolar range compared to single agent treatment, suggesting a novel therapeutic strategy. Moreover, we could identify differential functions of AKT isoforms on the growth of CTC-MCC-41 line after shRNA mediated knockdown, indicating a crucial role of AKT in this subset of more aggressive tumor cells.

2. Results

2.1. Strong Activation of the PI3K/AKT/mTOR Signaling Pathway in CTC-MCC-41

We examined the activation of the PI3K/AKT/mTOR signaling pathway by western blotting (Figure 1). The CTC-MCC-41 line shows a strong phosphorylation of AKT (S473) and of the mTOR downstream substrate S6 (S240/S244). In the next step, we treated the cells with the allosteric pan-AKT inhibitor MK2206, the mTOR inhibitor RAD001 or a combination of both drugs in vitro. The CTC line showed an impaired activation of AKT (S473) and mTOR downstream substrate S6 (S240/S244) after treatment, indicating a potential treatment target. Inhibition of AKT alone by MK2206 completely suppressed phosphorylation of AKT (S473) and diminishes further downstream signaling as measured by pS6 (S240/S244) in CTC-MCC-41 cells. A dual targeting approach of AKT/mTOR was able to further decrease pS6 (S240/S244) level in the CTCs compared to single treatment with MK2206. The treatment with RAD001, either as a single treatment or as a dual targeting approach by additionally targeting upstream AKT, resulted in a strong decrease of pS6 (S240/S244) levels. However, neither the single admission of RAD001 nor the combination therapy was able to completely suppress pS6 (S240/S244) signaling in CTC-MCC-41 line. When targeting mTOR by using RAD001, we did not detect an increase in phosphorylated AKT (S473) as propagated in the past due to feedback loops.

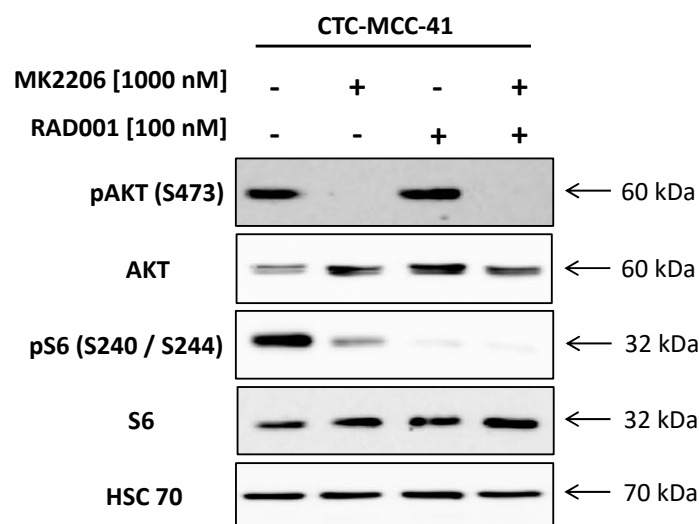


Figure 1. Activity of the PI3K/AKT/mTOR signaling pathway in CTC-MCC-41 and the inhibition of AKT/mTOR axis. The whole cell population of CTC-MCC-41 line (i.e., adherent and suspension cells) was treated for 24 h with AKT inhibitor MK2206 [1000 nM], mTOR inhibitor RAD001 [100 nM], the combination of both [MK2206 1000 nM/RAD001 100 nM] or solvent DMSO. Primary specific antibodies against pAKT (S473), pS6 (S240/S244), pan AKT and S6 were used to access the activity of the pathway and confirm the inhibition of the respective target. Housekeeping protein HSC70 was used as a loading control.

Next, the effect of MK2206 and RAD001 on proliferation of the colon CTC line was measured under varying concentrations of allosteric AKT inhibitor MK2206 and mTOR inhibitor RAD001 ranging from 1 nM to 1000 nM (MK2206) and from 0.1 nM to 100 nM (RAD001), respectively (Figure 2). A dose-dependent inhibition of CTC growth was observed in comparison to untreated cells with IC_{50} values within the nanomolar range. The results indicate a high sensitivity of the colorectal CTC line CTC-MCC-41 for inhibition of the PI3K/AKT/mTOR signaling pathway by MK2206 and RAD001.

Single targeting of either AKT or mTOR by MK2206 (IC_{50} : 186 nM) or RAD001 (IC_{50} : 2.6 nM) in CTC-MCC-41 (Figure 2A,B) showed a high sensitivity for the inhibitor. However, dual targeting of the AKT/mTOR axis was superior to single inhibition and could further inhibit the colon CTC line growth in the combinatory treatment. The analysis of combination indices, according to the Chou and Talalay method [43], revealed synergistic (+++) to strong synergistic (++++ effects in CTC-MCC-41 cells in concentrations ranging from 62.50 nM/6.3 nM (MK2206/RAD001) to 1000 nM/100 nM (MK2206/RAD001) ($p \leq 0.0001$) (Figure 2C).

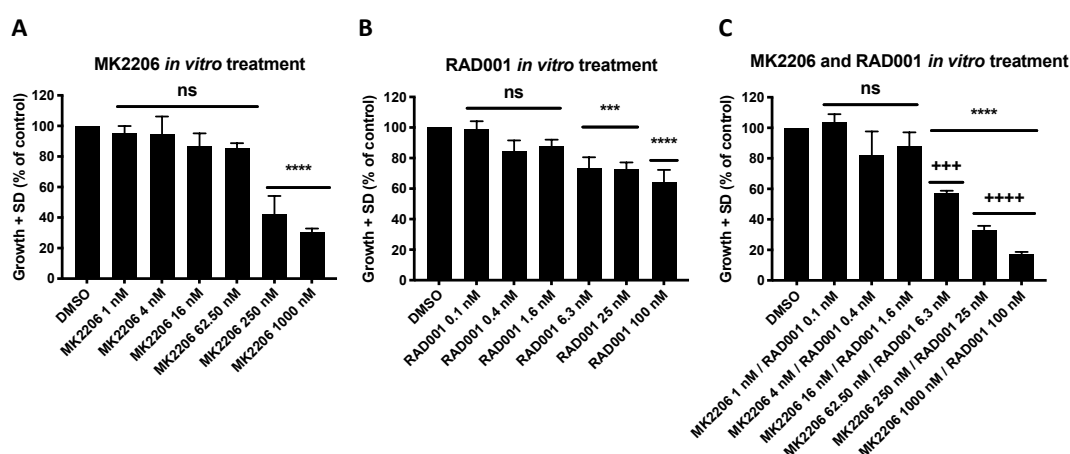


Figure 2. Inhibition of the PI3K/AKT/mTOR signaling pathway inhibits tumor cell growth of CTC-MCC-41 in vitro. The whole cell population of CTC-MCC-41 line (i.e., adherent and suspension cells) was seeded in triplicates in a density of 3000 cells per well into a 96 well flat bottom cell culture plate. The next day MK2206 (A), RAD001 (B) or the combination of both inhibitors (C) was added to the cells and the plate transferred into the IncuCyte® Zoom Live Cell Analysis System. Cell confluence was measured every two hours. Analysis of data was performed based on cell confluence using the provided manufacturers IncuCyte® Zoom Software. The data points were extracted from one representative time point during the exponential growth phase ($t = 110$ h). p values were calculated using one-way ANOVA with Dunnett's multiple comparisons test (ns $p > 0.05$; *** $p \leq 0.001$; **** $p \leq 0.0001$). Combination indices (CI) were calculated according to the Chou and Talalay method (++++ strong synergism CI 0.1–0.3; +++ synergism CI 0.3–0.7). The mean values ($n = 3$) with standard deviation are shown.

2.2. Differential PI3K/AKT/mTOR Signaling in Suspension and Adherent Phenotype of CTC-MCC-41 Cells

To further investigate the activity of the PI3K/AKT/mTOR signaling pathway and other pathways that frequently interact with PI3K/AKT/mTOR signaling, such as the RAS/RAF/MEK/ERK signaling pathway, we conducted further western blot analysis on the CTC-MCC-41 cells (Figure 3). As the cells show a biphasic phenotype in cell culture (suspension vs. adherent), we separated the suspension and adherent fraction particularly. Comparing the whole population, the adherent and the suspension cell fraction, we detected differences restricted to the pAKT (S473) levels (Figure 3A). While the adherent cells show a strong activation of AKT (S473) and therefore matching the whole cell population, the suspension fraction shows significantly decreased pAKT (S473) levels compared to all cells ($p = 0.0005$) and the adherent fraction ($p = 0.0055$) (Figure 3B). No significant differences could be observed in pmTOR (S2448), pERK1/2 (T202/Y204) and pS6 (S240/S244) with respect to the fractions and the whole population. However, we found that CTC-MCC-41 in general showed a strong activity of mTOR, AKT,

ERK1/2 and S6. Comparing the whole cell lysate to another solid colorectal cancer cell line, namely HT29 cells, we detected significant higher levels of pAKT (S473) ($p = 0.0017$) and pS6 (S240/S244) ($p = 0.0082$), but not of pmTOR (S2448) ($p = 0.8729$) in the CTCs. Interestingly, pERK1/2 (T202/Y204) expression was significantly higher ($p = 0.0005$) in HT29 control and lower among the whole population, as well as the suspension and adherent fraction of CTC-MCC-41.

A

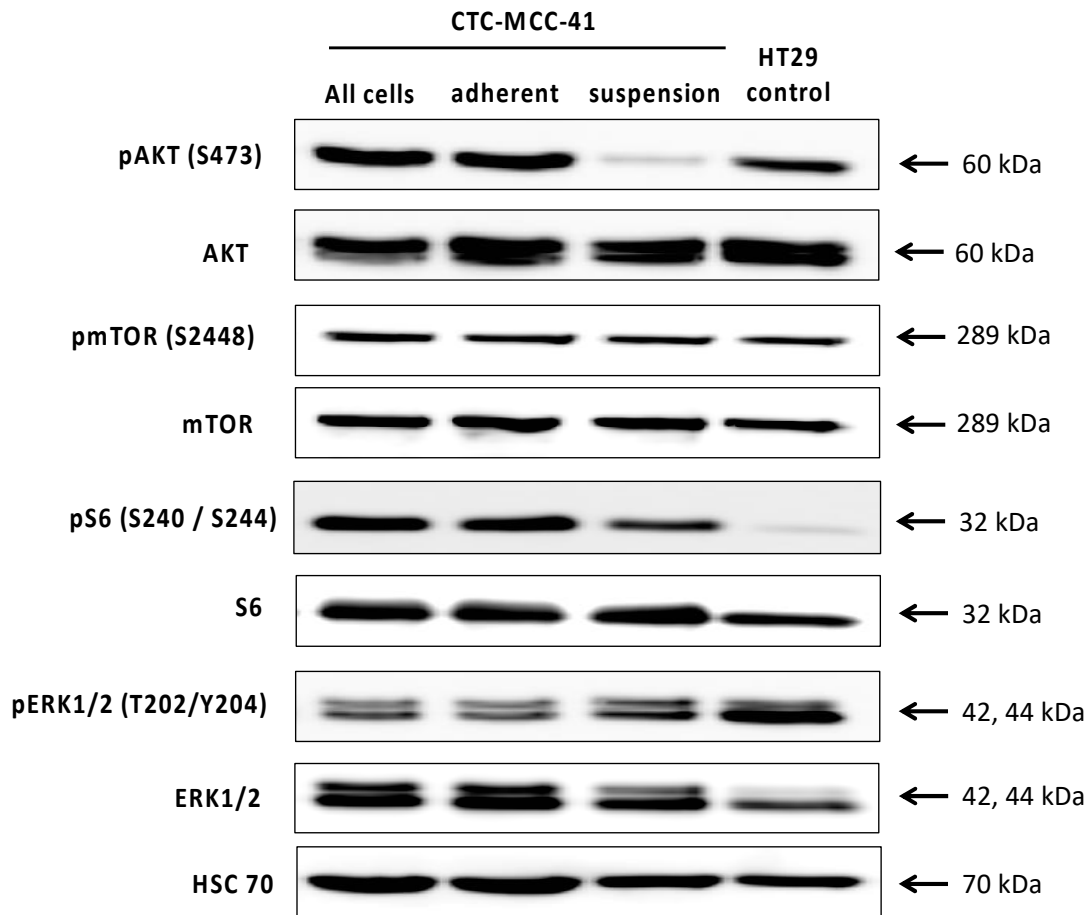


Figure 3. Cont.

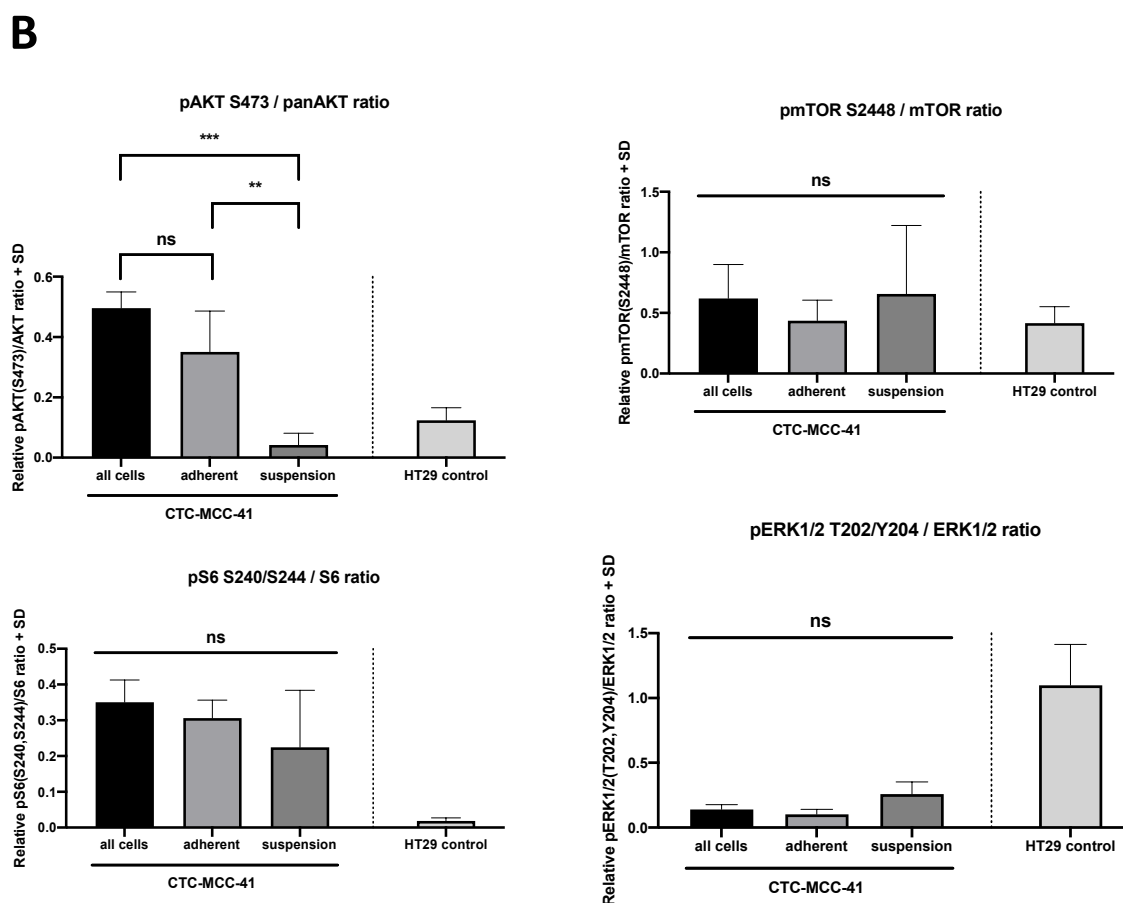


Figure 3. Differential activity of the PI3K/AKT/mTOR signaling pathway in suspension and adherent phenotype of CTC-MCC-41. (A) CTC-MCC-41 adherent and suspension cells were separated in the cell culture and subjected to western blot analysis. Whole cell lysates (also referred to as whole population) of CTC-MCC-41 and colorectal cancer cell line HT29 cells were used as control. Primary antibodies against mTOR, pmTOR (S2448), AKT, pAKT (S473), ERK1/2, pERK1/2 (T202/Y204), S6 and pS6 (S240/244) were used to analyze the activity of the RAS/RAF/MEK/ERK and the PI3K/AKT/mTOR signaling pathway. HSC70 was used as a loading control for equal protein loading. (B) Densitometric quantification of the western blot analysis as shown in (A). The mean values of relative protein activity ($n = 3$) normalized to HSC70 loading control with SD are shown. p values were calculated using one-way ANOVA with Tukey's multiple comparisons test (ns $p > 0.05$; ** $p \leq 0.01$; *** $p \leq 0.001$).

2.3. AKT Isoform Specific Signaling in CTC-MCC-41 Cells

To further verify the hypothesis of a distinct role of AKT isoforms in the CTC-MCC-41 line we generated stable lentiviral isoform specific AKT knockdowns of AKT1, AKT2 and AKT3 in CTC-MCC-41 cells. In proliferation assays we could detect an impaired growth of CTC-MCC-41 cells harboring AKT1 ($p < 0.0001$) and AKT2 knockdown ($p < 0.0001$) compared to scrambled control (Figure 4A). The efficacy of the AKT knockdown was 89% and 91% for AKT1 and AKT2, respectively (Figure 4B). We were not able to detect AKT3 expression in CTC-MCC-41 cells by western blotting. Matching the findings from the western blot analysis (Figure 4B), no significant difference on the proliferation in cells, stably expressing the AKT3 knockdown vector ($p = 0.9754$) compared to control was observed (Figure 4A). To analyze the possibility that growth inhibition of CTC-MCC-41 cells after AKT knockdown was due to increased apoptosis, we conducted FACS analysis and PI/Annexin V FITC staining (Supplementary Figure S1). The apoptosis rates did not significantly differ between the AKT isoform specific knockdowns. Additionally, we could detect an equal viability among the

cells. Therefore, we conclude that growth inhibition of CTC-MCC-41 cells was not due to increased apoptosis after AKT isoform specific knockdown.

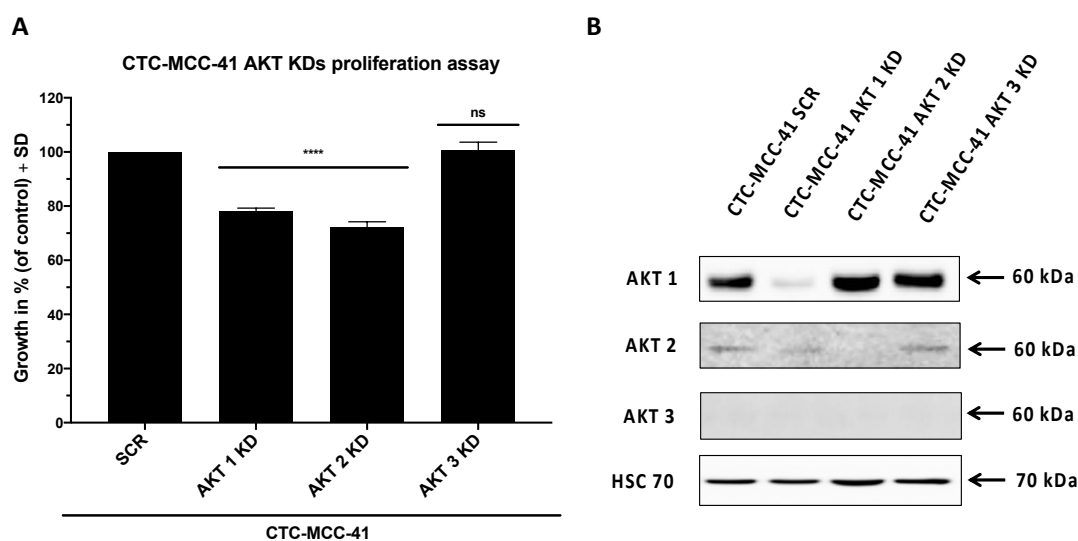


Figure 4. AKT1 and AKT2 knockdown significantly decreases CTC growth in vitro. **(A)** AKT isoform specific shRNA mediated knockdowns (KD) of the whole cell population (i.e., adherent and suspension cells) of CTC-MCC-41 and scrambled (SCR) control were seeded in triplicates in a density of 3000 cells per well into a 96 well flat bottom cell culture plate and placed into the IncuCyte® Zoom Live Cell Analysis System. Cell confluence was measured every two hours. Analysis of data was performed based on cell confluence using the provided manufacturers IncuCyte® Zoom Software. The data points were extracted from one representative time point during the exponential growth phase ($t = 90$ h). p values were calculated using one-way ANOVA with Dunnett's multiple comparisons test (ns $p > 0.05$; **** $p \leq 0.0001$). The mean values ($n = 3$) with standard deviation are shown. **(B)** Confirmation of stable AKT isoform specific shRNA mediated knockdown of AKT1, AKT2 and AKT3 in CTC-MCC-41 using western blot analysis. A scrambled (SCR) vector served as control. AKT3 signal could not be detected in CTC-MCC-41 cells.

3. Discussion

In this work, we provide first evidence on a crucial role of PI3K/AKT/mTOR signaling in CTC-MCC-41 cells. The sensitivity towards the allosteric AKT inhibitor MK2206 and the synergistic effects on the proliferation by additional targeting mTOR using RAD001 in the colon CTC line provides a rationale for dual targeting the AKT and mTOR axis as postulated earlier [44–48]. The complexity of signaling pathway networks including the PI3K/AKT/mTOR and the RAS/RAF/MEK/ERK pathway makes it difficult to choose the right treatment without triggering crosstalk [49]. Aberrant activation of the PI3K/AKT/mTOR pathway in CRC has been associated with carcinogenesis, early metastatic formation as well as maintenance of established CRC [50]. High levels of phosphorylated AKT (S473) have been reported in 46% of CRC samples and could be linked to increased proliferation, reduced apoptosis and poor clinicopathological outcome including lymph node metastasis and venous vessel invasion [40]. Additionally, a study by Johnson et al., revealed a significantly upregulation of Akt1, Akt2, pmTOR (S2448) and pS6 (T389) in colorectal cancer samples compared to normal tissue of the same patient [50].

Accounting for the high prevalence of *PIK3CA* mutations in one third of all CRCs [51,52], combined targeting of AKT and downstream substrate mTOR will be necessary to maintain the inhibition of the signaling pathway [53].

Interestingly, mTOR is not only a downstream substrate of AKT, but also obligatory for full activation of the AKT activity by catalyzing the phosphorylation at serine residue 473 [32]. Dual targeting

of both AKT and mTOR therefore provides a stronger inhibition of the PI3K/AKT/mTOR signaling pathway and fewer possible escape mechanisms than single drug therapy. The efficacy of RAD001 was previously examined in a phase II clinical trial (NCT00419159) as a single agent therapy for CRC patients who relapsed on conventional treatment regimens. Although the high frequency of PI3K/AKT/mTOR pathway mutations in CRC and the results from a phase I study promised a robust anti-tumor activity, RAD001 failed to prevent disease progression in a phase II clinical trial [54]. The authors emphasized that a combination therapy may be beneficial as mTOR inhibition alone may trigger negative feedback loops inside the pathway leading to increased upstream signaling [49,54]. Therefore, the efficacy of combinatorial inhibition of CTCs in vitro using MK2206 and RAD001 should be further examined and complemented by in vivo data in xenograft models.

Drug sensitivity screening using CTCs has been conducted in the past [27,28,55]. In 2014, Yu et al. were the first to establish drug sensitivity testing on six stable CTC lines in vitro as well as in a xenograft mouse model in vivo [27]. Pearl et al. were able to successfully predict the sensitivity and response to treatment using CTCs derived from patients suffering from ovarian cancer [55]. Moreover, the authors could successfully confirm the prediction for 13 out of 13 patients in a retrospective analysis [55]. Recently, Koch et al. established a permanent CTC line, namely CTC-ITB-01, derived from a metastatic breast cancer patient. CTC-ITB-01 line exhibited tumorigenic and metastatic capacity in a xenograft mouse model in vivo and remained estrogen receptor positive in culture. Interestingly, the CTC-ITB-01 conserved the same characteristics as the CTCs in the patient. In an in vitro drug sensitivity assay the authors detected a high sensitivity of CTC-ITB-01 for CDK4/6 inhibition using Palbociclib. The high sensitivity of Palbociclib, which is now routinely used in patients who relapsed on prior endocrine therapy, may implicate that the patient the CTC were derived from may could have benefitted from treatment with Palbociclib [28]. Hence, these studies and the model established by Koch et al. indicate the potential of preclinical drug screening with CTCs which should be extensively performed and validated to be implemented into the clinics.

In addition to the drug sensitivity assays concerning the PI3K/AKT/mTOR pathway, we successfully established stable lentiviral knockdowns of AKT1, AKT2 and AKT3 to investigate the functional role of these AKT isoforms in the CTC-MCC-41 line. In the past years, the distinct functions of AKT isoforms were part of extensive research [56–58]. In agreement with previously published findings on the effect of AKT1 on the proliferation of solid tumor cells [56,59], as well as on disseminated tumor cells [60], we observed a decrease in cell proliferation as a consequence of AKT1 knockdown. Although mutations in AKT are rare events in primary CRC samples [61], an oncogenic effect of the AKT1 missense mutation E17K leading to increased signaling through constitutive activation has been reported in CRC [62]. A study on breast cancer CTCs conducted by Aktas et al. was recently able to identify AKT2 expression as a marker of epithelial-mesenchymal-transition (EMT) in more than 60% of CTC positive samples analyzed [63]. The functional role of AKT2 in the physiologically state and in cancer cells has been reported as opposing compared to AKT1 [64,65]. While AKT1 activation directly stimulates cell growth by phosphorylation of p21 and therefore disinhibiting G1-S-transition, AKT2 activation promotes cell cycle exit through p21 binding, therefore competing with AKT1 phosphorylation [64]. However, in our experiments, we observed a significant reduction of CTC-MCC-41 proliferation in vitro after AKT2 specific knockdown, suggesting a crucial role of the kinase in these metastases-competent CTCs. In line with our data, other groups reported increased cell death and suppressed proliferation in CRC cell lines [66,67] and further entities of cancer after AKT2 specific knockdown [68,69]. As Grottke et al. reported, knockdown of AKT3 promoted migration and metastasis in breast cancer cells [70]. Therefore, a reduced or even undetectable expression of AKT3 may be interpreted as a result of downregulation in metastasizing CTCs.

The CTC-MCC-41 line has been described to express ALDH1 and CD133, two common markers of stem cells [4,29,71]. Additionally, expression of EMT inducer SNAIL1 indicates an intermediate epithelial/mesenchymal phenotype which is in line with the phenotype of the cell line in culture reversing from adherent to suspension cells and vice versa [4]. Moreover, separate cultivation of

one fraction, either the suspension or adherent CTCs alone, gives rise to the respective counterpart. One possible explanation in the context of CTCs for this morphology in vitro may be that it reflects the situation in the bloodstream of metastatic patients. The suspension phenotype may reflect those cells who have gone through EMT, while the adherent cells potentially mimic the cells after mesenchymal–epithelial transition. In our experiments we observed diminished phosphorylated AKT (S473) levels exclusively in the suspension fraction of CTC-MCC-41 compared to the adherent fraction and whole cell population. Our data are in line with results from Salt et al. [72] who induced EMT in non-small cell lung cancer cells and also could detect lower pAKT levels after EMT. This may support the hypothesis of a crucial role of EMT in CTCs that has been frequently discussed in the past [73]. Additionally, the lower levels of phosphorylated AKT (S473) in the suspension fraction may implicate a dormant state, as this fraction seems to mimic the properties of CTC in the patient’s bloodstream. The idea of a dormant state with only basic metabolism rate without proliferation has already been proposed in the past [74]. However, as only one permanent CTC line was used in this study, the crucial role of the AKT/mTOR axis in colorectal cancer CTCs should be confirmed in the future when more long-term stable CRC CTC lines are available.

In conclusion, we functionally assessed the PI3K/AKT/mTOR pathway in a permanent CTC line, namely CTC-MCC-41, derived from a patient with colorectal cancer. In our AKT isoform specific knockdown we demonstrated that AKT1 and AKT2 play a crucial role with respect to proliferation in this colon CTC line. Additionally, we could identify the inhibition of AKT and mTOR in CTCs as a novel druggable target in colorectal cancer. Especially the dual inhibition of AKT and mTOR led to strong decrease of CTC-MCC-41 cell growth in vitro. Although further validation of drug sensitivity screening and comparison with the primary tumor site are necessary before implementation into the clinical routine, the inhibition of CTCs may be a valuable future target to block metastatic progression in CRC patients.

4. Materials and Methods

4.1. Standard Cell Culture

The colon CTC-MCC-41 line was established in the laboratory of rare human circulating cells at the University Medical Center of Montpellier, France [4] and transferred to University Medical Center Hamburg-Eppendorf, Germany. For CTC cultivation, Roswell Park Memorial Institute (RPMI)-1640 media (#11875-093, Thermo Fisher Scientific Inc., Waltham, MA, USA) supplied with 10% fetal calf serum (FCS) (#26140-079, Thermo Fisher Scientific Inc., Waltham, MA, USA) 1% penicillin/streptomycin mix (#15140-122, Thermo Fisher Scientific Inc., Waltham, MA, USA) 1% L-glutamine (#25030-081, Thermo Fisher Scientific Inc., Waltham, MA, USA), 1% insulin-transferrin-selenium-A supplement (100×) liquid (#51300-044, Thermo Fisher Scientific Inc., Waltham, MA, USA), 10 ng/mL human FGF2 (#130-093-839, Miltenyi Biotech, Bergisch Gladbach, Germany), 50 ng/mL human EGF (#130-097-749, Miltenyi Biotech, Bergisch Gladbach, Germany), 0.1 µg/mL hydrocortisone (#74142, Stemcell Technologies Inc., Vancouver, Canada) was used. CTCs were routinely cultivated in non-adherent cell culture flasks (Greiner Bio-One, Kremsmünster, Austria) and passaged by separating the cells growing adherent from the cells growing in suspension. The supernatant was transferred into a falcon tube and centrifuged at 650 g for 5 min at room temperature (RT). In the meanwhile, the cells adherent to the flask were washed with 5 mL PBS and then incubated with Accutase® solution (#A6964, Sigma Aldrich, St. Louis, MO, USA) for 5 min at 37 °C, 5% CO₂ in the incubator. Suspension fraction cells were washed with PBS and afterwards merged with adherent fraction, centrifuged again at 650 g for 5 min at RT and then resuspended in fresh cell culture medium. The CTC-MCC-41 medium was changed every week. HT29 cells were cultured in Dulbecco’s Modified Eagle Medium (DMEM) (#41965-039, Thermo Fisher Scientific Inc., Waltham, MA, USA) supplied with 10% FCS and 1% penicillin/streptomycin mix. Cell culture media were changed twice a week. HEK293T cells were cultivated in DMEM supplied with 10% FCS, 1% penicillin/streptomycin mix, 2 mM L-glutamine, 1 mM sodium-pyruvate (#S8636, Sigma

Aldrich, St. Louis, MO, USA) and 20 mM HEPES (#15630, Thermo Fisher Scientific Inc., Waltham, MA, USA). Cultivation medium was refreshed two to three times a week. For transduced cell lines selection antibiotics in an appropriate concentration were maintained in standard cell media to prevent growth of not transduced cells. All cells were grown at 37 °C, 5% CO₂. All used cell lines were regularly tested for mycoplasma contamination.

4.2. Stable AKT Isoform Specific Knockdown

HEK293T cells were transfected with specific shRNAs purchased from Sigma-Aldrich (St. Louis, MO, USA) targeting either AKT isoforms (pLKO.1-AKT1-puromycin, pLKO.1-AKT2-puromycin, pLKO.1-AKT3-puromycin (2 µg)) or scrambled control (pLKO.1-shRNA-puromycin (2 µg)). Packaging plasmids for third generation lentiviral transfection (pCMV-VSV-G (2 µg), pMDLg/PRE (10 µg), pRSV-REV (5 µg)) were used. The transfection rate was enhanced using the Lipofectamine 3000 transfection reagent according to the manufacturer's instructions (#L3000-008, Thermo Fisher Scientific Inc., Waltham, MA, USA). The target cell line was seeded in a density of 2×10^5 cells into six well culture plates the day before. Every 24 h the viral particles were collected, filtered through a 0.22 µm filter and 2 mL of the supernatant was added to the target cell line CTC-MCC-41. This step was subsequently repeated three times. Transduction was enhanced using 16 µg hexadimethrine bromide (#H9268, Sigma Aldrich, St. Louis, MO, USA). On the fourth day of transduction the cells were selected by adding 1.5 µg/mL Puromycin to the cell culture media for at least two weeks before cells were used for experiments. Successful isoform specific knockdown of the AKT isoforms was confirmed in western blot analysis prior to further experiments.

4.3. Proliferation Assay and Therapeutic Drug Sensitivity Testing

The CTC-MCC-41 line was treated as described above and seeded in technical triplicates in a density of 3000 cells per well into a 96 well flat bottom cell culture plate (Greiner Bio-One, Kremsmünster, Austria). The cells were allowed to settle down at 37 °C, 5% CO₂ overnight. The next day, the plate was placed into the IncuCyte® Zoom Live Cell Analysis System (Essen Bioscience, Ann Arbor, MI, USA) and cell confluence was measured every 2 hours. Analysis of data was performed based on cell confluence using the provided manufacturer's IncuCyte® Zoom Software. Statistical analysis of acquired data was carried out using GraphPad Prism 8 (GraphPad Software Inc., San Diego, CA, USA). For the therapeutic drug sensitivity testing the CTC-MCC-41 line was prepared as written above for the proliferation assay. The next day, freshly prepared serial dilutions of either AKT inhibitor MK2206 (#S1078, Selleck Chemicals, Houston, TX, USA), mTOR inhibitor RAD001 (#S1120, Selleck Chemicals, Houston, TX, USA), the combination of both drugs or vehicle dimethyl sulfoxide (DMSO) (#D5879, Sigma-Aldrich, St. Louis, MO, USA) were added to the cells. Measurement and calculation using the IncuCyte® Zoom system was carried out as described in the proliferation section above.

4.4. Apoptosis Assay

5×10^5 cells of either CTC-MCC-41 scrambled (SCR) control, CTC-MCC-41 AKT1 knockdown, CTC-MCC-41 AKT2 knockdown or CTC-MCC-41 stably expressing the AKT3 knockdown vector were plated in 6 well culture plates in biological quadruplicates two days before analysis. 2 µM of Staurosporin (#S5921, Sigma-Aldrich, St. Louis, MO, USA) was added as a positive control 48 h prior to measurement. Unstained CTC-MCC-41 scrambled was used as negative control. The cells were then transferred to the incubator at 37 °C, 5% CO₂ for 48 h. After 48 h, the suspension cells were removed, adherent cells carefully washed with PBS and detached with 0.05% trypsin-EDTA (#25300-054, Thermo Fisher Scientific Inc., Waltham, MA, USA). Afterwards the adherent and suspension cells were centrifuged at 1900 rpm for 5 min at room temperature. The cells were resuspended in 100 µL 1× binding buffer supplied within the FITC Annexin V Apoptosis Detection Kit (#556547, BD Biosciences, Franklin Lakes, NJ, USA) and transferred to Falcon® round-bottom polystyrene tubes (Corning Inc., New York, NY, USA). Cells were stained with propidium iodide, FITC Annexin V or the combination

of both dyes according to manufacturer's instructions. The FACS measurement was performed on BD LSRFortessa (BD Biosciences, Franklin Lakes, NJ, USA) and laser settings precisely improved for CTC-MCC-41 cells using the unstained control. Data was analyzed with FlowJo version 10.6.1 (BD Biosciences, Franklin Lakes, NJ, USA). Statistical analysis of the data was performed as described in the statistical analysis section.

4.5. Western Blot Analysis and Densitometric Quantification

Cell lysates were prepared in NP-40 lysis buffer containing 50 mM HEPES (#H3375, Sigma-Aldrich, St. Louis, MO, USA) at pH 7.5, 150 mM NaCl (#0278, J.T. Baker, Thermo Fisher Scientific Inc., Waltham, MA, USA), 1% NP-40 (#98379, Sigma-Aldrich, St. Louis, MO, USA), 2% Aprotinin (#A162.2, Carl Roth GmbH + Co. KG, Karlsruhe, Germany), 2 mM EDTA (#E5134, Sigma-Aldrich, St. Louis, MO, USA), 50 mM NaF (#S7920, Sigma-Aldrich, St. Louis, MO, USA), 10 mM NaPPi (#S6422, Sigma-Aldrich, St. Louis, MO, USA), 10% Glycine (#3908, Carl Roth GmbH + Co. KG, Karlsruhe, Germany), 1 mM Sodium orthovanadate (#S6508, Sigma-Aldrich, St. Louis, MO, USA) and 1 mM PMSF (#10837091001, Sigma-Aldrich, St. Louis, MO, USA). Protein determination was conducted using a lowry protein assay (#5000112, Bio-Rad Laboratories Inc., Hercules, CA, USA). Proteins were separated in SDS page gel electrophoresis and transferred to a nitrocellulose membrane. Afterwards the membranes were incubated with specific primary antibodies against mTOR, pmTOR (S2448), pAKT (S473), AKT (pan), AKT1, AKT2, AKT3, pERK1/2 (T202/Y204), ERK1/2, pS6 (S240/S244), S6 (all Cell Signaling Technology Inc., Danvers, MA, USA) or HSC70 (Santa Cruz Biotechnology Inc., Dallas, TX, USA). Species specific horseradish peroxidase linked secondary antibodies against anti-rabbit IgG or anti-mouse IgG were purchased from Santa Cruz Biotechnology Inc (Dallas, TX, USA). Equal protein loading was ensured by 0.2% Ponceau S staining (#33427, Serva Electrophoresis GmbH, Heidelberg, Germany) and housekeeping protein HSC70. For more information on antibodies used in the experiments please see the supplementary material (Supplementary Table S1). Western blot images were acquired using the ImageQuant LAS 4000 system (GE Healthcare Bio-Sciences, Pittsburgh, PA, USA). Densitometric quantification of the western blots ($n = 3$) was done with the AIDA Image Analysis software (Elysia-raytest GmbH, Straubenhardt, Germany). Statistical analysis of the densitometric quantification was performed in GraphPad Prism 8 (GraphPad Software Inc., San Diego, CA, USA) as described in the statistical analysis section below.

4.6. Calculation of Combination Indices

Combination indices (CI) for drug combinations were calculated according to the Chou and Talalay method using CompuSyn software (ComboSyn Inc., Paramus, NJ, USA). CI values were encoded as recommended by Chou and Talalay [43]. Very strong synergism $CI < 0.1$; strong synergism $CI 0.1-0.3$; synergism $CI 0.3-0.7$; moderate synergism $0.7-0.85$; slight synergism $CI 0.85-0.90$; nearly additive $CI 0.9-1.10$; CI values > 1.1 were considered as antagonism.

4.7. Statistical Analysis

All statistical analyses were performed with implemented functions in GraphPad Prism 8.4.1 (GraphPad Software Inc., San Diego, CA, USA). A p value < 0.05 was considered as statistically significant. p values were encoded into asterisks as following: ns $p > 0.05$; * $p \leq 0.05$; ** $p \leq 0.01$; *** $p \leq 0.001$; **** $p \leq 0.0001$.

5. Conclusions

The PI3K/AKT/mTOR axis plays a crucial role in colorectal carcinoma (CRC). Here, we demonstrate a pivot role of this signaling pathway in the CTC-MCC-41 line, which is derived from a patient with colorectal cancer. CTC-MCC-41 is highly sensitive for dual inhibition of AKT/mTOR using MK2206 and RAD001 in vitro and exhibits strong synergistic effects within the nanomolar range in therapeutic drug screening assays. Strong activation of the PI3K/AKT/mTOR pathway indicated by phosphorylation of

AKT and downstream substrates could be observed. Furthermore, AKT isoform specific knockdown of AKT1 and AKT2 significantly diminished proliferation of the cell line in comparison to control, suggesting a crucial role of the PI3K/AKT/mTOR pathway in CTC-MCC-41. Therefore, these data may indicate that the inhibition of the PI3K/AKT/mTOR pathway in CTCs may be a valuable target to block metastatic progression in CRC patients that should be confirmed in further xenograft mouse models in vivo.

Supplementary Materials: The following are available online at <http://www.mdpi.com/2073-4409/9/9/2129/s1>, Supplementary Figure S1: Effect of AKT isoform specific knockdowns on apoptosis of CTC-MCC-41 cells, Supplementary Table S1: Primary and secondary antibodies used for Western blot analysis.

Author Contributions: Conceptualization, D.J.S., K.P., C.A.-P. and M.J.; methodology, D.J.S. and M.J.; formal analysis, D.J.S., M.J.; investigation, D.J.S.; resources and material support, L.C., C.A.-P. and M.J.; data curation, D.J.S.; writing—original draft preparation, D.J.S.; writing—review and editing, D.J.S. and M.J.; writing—critical revision of the manuscript: D.J.S., L.C., M.-T.H., N.H., K.P., C.A.-P. and M.J.; visualization, D.J.S.; supervision, D.J.S. and M.J.; project administration, D.J.S., K.P. and M.J. All authors have read and agreed to the published version of the manuscript.

Funding: C.A.-P. and L.C.: The establishment of the CTC-MCC-41 line was supported by the National Cancer Institute (INCa). The LCCRH is supported by the SIRIC Montpellier Cancer Grant INCa_Inserm_DGOS_12553.

Acknowledgments: We would like to thank the FACS Core facility (Department of Stem Cell Transplantation, University Medical Center Hamburg-Eppendorf, Hamburg, Germany) for technical assistance during the flow cytometry and the analysis of data. The graphical abstract was created with BioRender.com.

Conflicts of Interest: The authors declare no conflict of interest.

References

1. Seyfried, T.N.; Huysentruyt, L.C. On the origin of cancer metastasis. *Crit. Rev. Oncog.* **2013**, *18*, 43–73. [[CrossRef](#)] [[PubMed](#)]
2. Krakhmal, N.V.; Zavyalova, M.V.; Denisov, E.V.; Vtorushin, S.V.; Perelmuter, V.M. Cancer Invasion: Patterns and Mechanisms. *Acta Nat.* **2015**, *7*, 17–28. [[CrossRef](#)]
3. Chaffer, C.L.; Weinberg, R.A. A perspective on cancer cell metastasis. *Science* **2011**, *331*, 1559–1564. [[CrossRef](#)] [[PubMed](#)]
4. Cayrefourcq, L.; Mazard, T.; Joosse, S.; Solassol, J.; Ramos, J.; Assenat, E.; Schumacher, U.; Costes, V.; Maudelonde, T.; Pantel, K.; et al. Establishment and characterization of a cell line from human circulating colon cancer cells. *Cancer Res.* **2015**, *75*, 892–901. [[CrossRef](#)] [[PubMed](#)]
5. Cortés-Hernández, L.E.; Eslami, S.Z.; Alix-Panabières, C. Circulating tumor cell as the functional aspect of liquid biopsy to understand the metastatic cascade in solid cancer. *Mol. Asp. Med.* **2020**, *72*, 100816. [[CrossRef](#)] [[PubMed](#)]
6. Alix-Panabières, C.; Pantel, K. Circulating tumor cells: Liquid biopsy of cancer. *Clin. Chem.* **2013**, *59*, 110–118. [[CrossRef](#)] [[PubMed](#)]
7. Pantel, K.; Alix-Panabières, C. Cell lines from circulating tumor cells. *Oncoscience* **2015**, *2*, 815–816. [[CrossRef](#)]
8. Burz, C.; Pop, V.V.; Buiga, R.; Daniel, S.; Samasca, G.; Aldea, C.; Lupan, I. Circulating tumor cells in clinical research and monitoring patients with colorectal cancer. *Oncotarget* **2018**, *9*, 24561–24571. [[CrossRef](#)]
9. Hartkopf, A.D.; Wagner, P.; Wallwiener, D.; Fehm, T.; Rothmund, R. Changing levels of circulating tumor cells in monitoring chemotherapy response in patients with metastatic breast cancer. *Anticancer Res.* **2011**, *31*, 979–984.
10. Bielcikova, Z.; Jakabova, A.; Pinkas, M.; Zemanova, M.; Kolostova, K.; Bobek, V. Circulating tumor cells: What we know, what do we want to know about them and are they ready to be used in clinics? *Am. J. Transl. Res.* **2017**, *9*, 2807–2823.
11. Pailler, E.; Mezquita, L.; Faugeroux, V.; Oulhen, M.; Queffelec, P.; Remon, J.; Honore, A.; Laporte, M.; Forcato, C.; Lecluse, Y.; et al. Analysis of single circulating tumor cells (CTCs) to identify resistance mutations to ALK-inhibitors in both ALK-gene and bypass oncogenic pathways. *J. Clin. Oncol.* **2018**, *36*, 12038. [[CrossRef](#)]
12. Que, Z.; Luo, B.; Zhou, Z.; Dong, C.; Jiang, Y.; Wang, L.; Shi, Q.; Tian, J. Establishment and characterization of a patient-derived circulating lung tumor cell line in vitro and in vivo. *Cancer Cell Int.* **2019**, *19*, 21. [[CrossRef](#)]

13. Abdallah, E.A.; Fanelli, M.F.; Souza, E.S.V.; Machado Netto, M.C.; Gasparini Junior, J.L.; Araujo, D.V.; Ocea, L.M.; Buim, M.E.; Tariki, M.S.; Alves Vda, S.; et al. MRP1 expression in CTCs confers resistance to irinotecan-based chemotherapy in metastatic colorectal cancer. *Int. J. Cancer* **2016**, *139*, 890–898. [[CrossRef](#)] [[PubMed](#)]
14. Effenberger, K.E.; Schroeder, C.; Hanssen, A.; Wolter, S.; Eulenburg, C.; Tachezy, M.; Gebauer, F.; Izbicki, J.R.; Pantel, K.; Bockhorn, M. Improved Risk Stratification by Circulating Tumor Cell Counts in Pancreatic Cancer. *Clin. Cancer Res.* **2018**, *24*, 2844–2850. [[CrossRef](#)] [[PubMed](#)]
15. Reeh, M.; Effenberger, K.E.; Koenig, A.M.; Riethdorf, S.; Eichstadt, D.; Vettorazzi, E.; Uzunoglu, F.G.; Vashist, Y.K.; Izbicki, J.R.; Pantel, K.; et al. Circulating Tumor Cells as a Biomarker for Preoperative Prognostic Staging in Patients With Esophageal Cancer. *Ann. Surg.* **2015**, *261*, 1124–1130. [[CrossRef](#)] [[PubMed](#)]
16. Garrigos, N.; Gallego, J.; Guillen-Ponce, C.; Guaraz, P.; Garcia-Bautista, M.; Castillejo, A.; Gomez-Martinez, A.; Carrato, A.; Rodriguez-Lescure, A.; Soto, J.L. Circulating tumour cell analysis as an early marker for relapse in stage II and III colorectal cancer patients: A pilot study. *Clin. Transl. Oncol.* **2010**, *12*, 142–147. [[CrossRef](#)] [[PubMed](#)]
17. Alix-Panabieres, C.; Pantel, K. Clinical Applications of Circulating Tumor Cells and Circulating Tumor DNA as Liquid Biopsy. *Cancer Discov.* **2016**, *6*, 479–491. [[CrossRef](#)]
18. Pantel, K.; Alix-Panabieres, C. Liquid biopsy and minimal residual disease—Latest advances and implications for cure. *Nat. Rev. Clin. Oncol.* **2019**, *16*, 409–424. [[CrossRef](#)]
19. Cristofanilli, M.; Budd, G.T.; Ellis, M.J.; Stopeck, A.; Matera, J.; Miller, M.C.; Reuben, J.M.; Doyle, G.V.; Allard, W.J.; Terstappen, L.W.; et al. Circulating tumor cells, disease progression, and survival in metastatic breast cancer. *N. Engl. J. Med.* **2004**, *351*, 781–791. [[CrossRef](#)]
20. Cohen, S.J.; Punt, C.J.; Iannotti, N.; Saidman, B.H.; Sabbath, K.D.; Gabrail, N.Y.; Picus, J.; Morse, M.; Mitchell, E.; Miller, M.C.; et al. Relationship of circulating tumor cells to tumor response, progression-free survival, and overall survival in patients with metastatic colorectal cancer. *J. Clin. Oncol.* **2008**, *26*, 3213–3221. [[CrossRef](#)]
21. Bray, F.; Ferlay, J.; Soerjomataram, I.; Siegel, R.L.; Torre, L.A.; Jemal, A. Global cancer statistics 2018: GLOBOCAN estimates of incidence and mortality worldwide for 36 cancers in 185 countries. *CA Cancer J. Clin.* **2018**, *68*, 394–424. [[CrossRef](#)] [[PubMed](#)]
22. Van der Geest, L.G.; Lam-Boer, J.; Koopman, M.; Verhoef, C.; Elferink, M.A.; de Wilt, J.H. Nationwide trends in incidence, treatment and survival of colorectal cancer patients with synchronous metastases. *Clin. Exp. Metastasis* **2015**, *32*, 457–465. [[CrossRef](#)] [[PubMed](#)]
23. Wang, J.; Li, S.; Liu, Y.; Zhang, C.; Li, H.; Lai, B. Metastatic patterns and survival outcomes in patients with stage IV colon cancer: A population-based analysis. *Cancer Med.* **2020**, *9*, 361–373. [[CrossRef](#)] [[PubMed](#)]
24. Rahbari, N.N.; Bork, U.; Kircher, A.; Nimitz, T.; Scholch, S.; Kahlert, C.; Schmidt, T.; Steinert, G.; Ulrich, A.B.; Reissfelder, C.; et al. Compartmental differences of circulating tumor cells in colorectal cancer. *Ann. Surg. Oncol.* **2012**, *19*, 2195–2202. [[CrossRef](#)] [[PubMed](#)]
25. Tan, Y.; Wu, H. The significant prognostic value of circulating tumor cells in colorectal cancer: A systematic review and meta-analysis. *Curr. Probl. Cancer* **2018**, *42*, 95–106. [[CrossRef](#)] [[PubMed](#)]
26. Keller, L.; Pantel, K. Unravelling tumour heterogeneity by single-cell profiling of circulating tumour cells. *Nat. Rev. Cancer* **2019**, *19*, 553–567. [[CrossRef](#)]
27. Yu, M.; Bardia, A.; Aceto, N.; Bersani, F.; Madden, M.W.; Donaldson, M.C.; Desai, R.; Zhu, H.; Comaills, V.; Zheng, Z.; et al. Cancer therapy. Ex vivo culture of circulating breast tumor cells for individualized testing of drug susceptibility. *Science* **2014**, *345*, 216–220. [[CrossRef](#)]
28. Koch, C.; Kuske, A.; Joesse, S.A.; Yigit, G.; Sflomos, G.; Thaler, S.; Smit, D.J.; Werner, S.; Borgmann, K.; Gartner, S.; et al. Characterization of circulating breast cancer cells with tumorigenic and metastatic capacity. *EMBO Mol. Med.* **2020**, e11908. [[CrossRef](#)]
29. Soler, A.; Cayrefourcq, L.; Mazard, T.; Babayan, A.; Lamy, P.J.; Assou, S.; Assenat, E.; Pantel, K.; Alix-Panabieres, C. Autologous cell lines from circulating colon cancer cells captured from sequential liquid biopsies as model to study therapy-driven tumor changes. *Sci. Rep.* **2018**, *8*, 15931. [[CrossRef](#)]
30. Rodrigues, P.; Vanharanta, S. Circulating Tumor Cells: Come Together, Right Now, Over Metastasis. *Cancer Discov.* **2019**, *9*, 22–24. [[CrossRef](#)]

31. Alix-Panabieres, C.; Cayrefourcq, L.; Mazard, T.; Maudelonde, T.; Assenat, E.; Assou, S. Molecular Portrait of Metastasis-Competent Circulating Tumor Cells in Colon Cancer Reveals the Crucial Role of Genes Regulating Energy Metabolism and DNA Repair. *Clin. Chem.* **2017**, *63*, 700–713. [[CrossRef](#)] [[PubMed](#)]
32. Manning, B.D.; Toker, A. AKT/PKB Signaling: Navigating the Network. *Cell* **2017**, *169*, 381–405. [[CrossRef](#)]
33. Hanahan, D.; Weinberg, R.A. Hallmarks of cancer: The next generation. *Cell* **2011**, *144*, 646–674. [[CrossRef](#)] [[PubMed](#)]
34. Porta, C.; Paglino, C.; Mosca, A. Targeting PI3K/Akt/mTOR Signaling in Cancer. *Front. Oncol.* **2014**, *4*, 64. [[CrossRef](#)] [[PubMed](#)]
35. Wu, P.; Hu, Y.Z. PI3K/Akt/mTOR pathway inhibitors in cancer: A perspective on clinical progress. *Curr. Med. Chem.* **2010**, *17*, 4326–4341. [[CrossRef](#)] [[PubMed](#)]
36. Dienstmann, R.; Rodon, J.; Serra, V.; Tabernero, J. Picking the point of inhibition: A comparative review of PI3K/AKT/mTOR pathway inhibitors. *Mol. Cancer Ther.* **2014**, *13*, 1021–1031. [[CrossRef](#)] [[PubMed](#)]
37. Janku, F.; Yap, T.A.; Meric-Bernstam, F. Targeting the PI3K pathway in cancer: Are we making headway? *Nat. Rev. Clin. Oncol.* **2018**, *15*, 273–291. [[CrossRef](#)] [[PubMed](#)]
38. Sarbassov, D.D.; Guertin, D.A.; Ali, S.M.; Sabatini, D.M. Phosphorylation and regulation of Akt/PKB by the rictor-mTOR complex. *Science* **2005**, *307*, 1098–1101. [[CrossRef](#)] [[PubMed](#)]
39. Chen, H.; Gao, J.; Du, Z.; Zhang, X.; Yang, F.; Gao, W. Expression of factors and key components associated with the PI3K signaling pathway in colon cancer. *Oncol. Lett.* **2018**, *15*, 5465–5472. [[CrossRef](#)]
40. Itoh, N.; Semba, S.; Ito, M.; Takeda, H.; Kawata, S.; Yamakawa, M. Phosphorylation of Akt/PKB is required for suppression of cancer cell apoptosis and tumor progression in human colorectal carcinoma. *Cancer* **2002**, *94*, 3127–3134. [[CrossRef](#)]
41. Hirai, H.; Sootome, H.; Nakatsuru, Y.; Miyama, K.; Taguchi, S.; Tsujioka, K.; Ueno, Y.; Hatch, H.; Majumder, P.K.; Pan, B.S.; et al. MK-2206, an allosteric Akt inhibitor, enhances antitumor efficacy by standard chemotherapeutic agents or molecular targeted drugs in vitro and in vivo. *Mol. Cancer Ther.* **2010**, *9*, 1956–1967. [[CrossRef](#)] [[PubMed](#)]
42. Schuler, W.; Sedrani, R.; Cottens, S.; Haberland, B.; Schulz, M.; Schuurman, H.J.; Zenke, G.; Zerwes, H.G.; Schreier, M.H. SDZ RAD, a new rapamycin derivative: Pharmacological properties in vitro and in vivo. *Transplantation* **1997**, *64*, 36–42. [[CrossRef](#)] [[PubMed](#)]
43. Chou, T.C. Theoretical basis, experimental design, and computerized simulation of synergism and antagonism in drug combination studies. *Pharmacol. Rev.* **2006**, *58*, 621–681. [[CrossRef](#)] [[PubMed](#)]
44. Ewald, F.; Grabinski, N.; Grottke, A.; Windhorst, S.; Norz, D.; Carstensen, L.; Staufer, K.; Hofmann, B.T.; Diehl, F.; David, K.; et al. Combined targeting of AKT and mTOR using MK-2206 and RAD001 is synergistic in the treatment of cholangiocarcinoma. *Int. J. Cancer* **2013**, *133*, 2065–2076. [[CrossRef](#)] [[PubMed](#)]
45. Ewald, F.; Norz, D.; Grottke, A.; Bach, J.; Herzberger, C.; Hofmann, B.T.; Nashan, B.; Jucker, M. Vertical Targeting of AKT and mTOR as Well as Dual Targeting of AKT and MEK Signaling Is Synergistic in Hepatocellular Carcinoma. *J. Cancer* **2015**, *6*, 1195–1205. [[CrossRef](#)]
46. Ewald, F.; Norz, D.; Grottke, A.; Hofmann, B.T.; Nashan, B.; Jucker, M. Dual Inhibition of PI3K-AKT-mTOR- and RAF-MEK-ERK-signaling is synergistic in cholangiocarcinoma and reverses acquired resistance to MEK-inhibitors. *Investig. New Drugs* **2014**, *32*, 1144–1154. [[CrossRef](#)]
47. Schulte, A.; Ewald, F.; Spyra, M.; Smit, D.J.; Jiang, W.; Salamon, J.; Jücker, M.; Mautner, V.-F. Combined Targeting of AKT and mTOR Inhibits Proliferation of Human NF1-Associated Malignant Peripheral Nerve Sheath Tumour Cells In Vitro but not in a Xenograft Mouse Model In Vivo. *Int. J. Mol. Sci.* **2020**, *21*, 1548. [[CrossRef](#)]
48. Francipane, M.G.; Lagasse, E. mTOR pathway in colorectal cancer: An update. *Oncotarget* **2014**, *5*, 49–66. [[CrossRef](#)]
49. O'Reilly, K.E.; Rojo, F.; She, Q.B.; Solit, D.; Mills, G.B.; Smith, D.; Lane, H.; Hofmann, F.; Hicklin, D.J.; Ludwig, D.L.; et al. mTOR inhibition induces upstream receptor tyrosine kinase signaling and activates Akt. *Cancer Res.* **2006**, *66*, 1500–1508. [[CrossRef](#)]
50. Johnson, S.M.; Gulhati, P.; Rampy, B.A.; Han, Y.; Rychahou, P.G.; Doan, H.Q.; Weiss, H.L.; Evers, B.M. Novel expression patterns of PI3K/Akt/mTOR signaling pathway components in colorectal cancer. *J. Am. Coll. Surg.* **2010**, *210*, 767–776. [[CrossRef](#)]

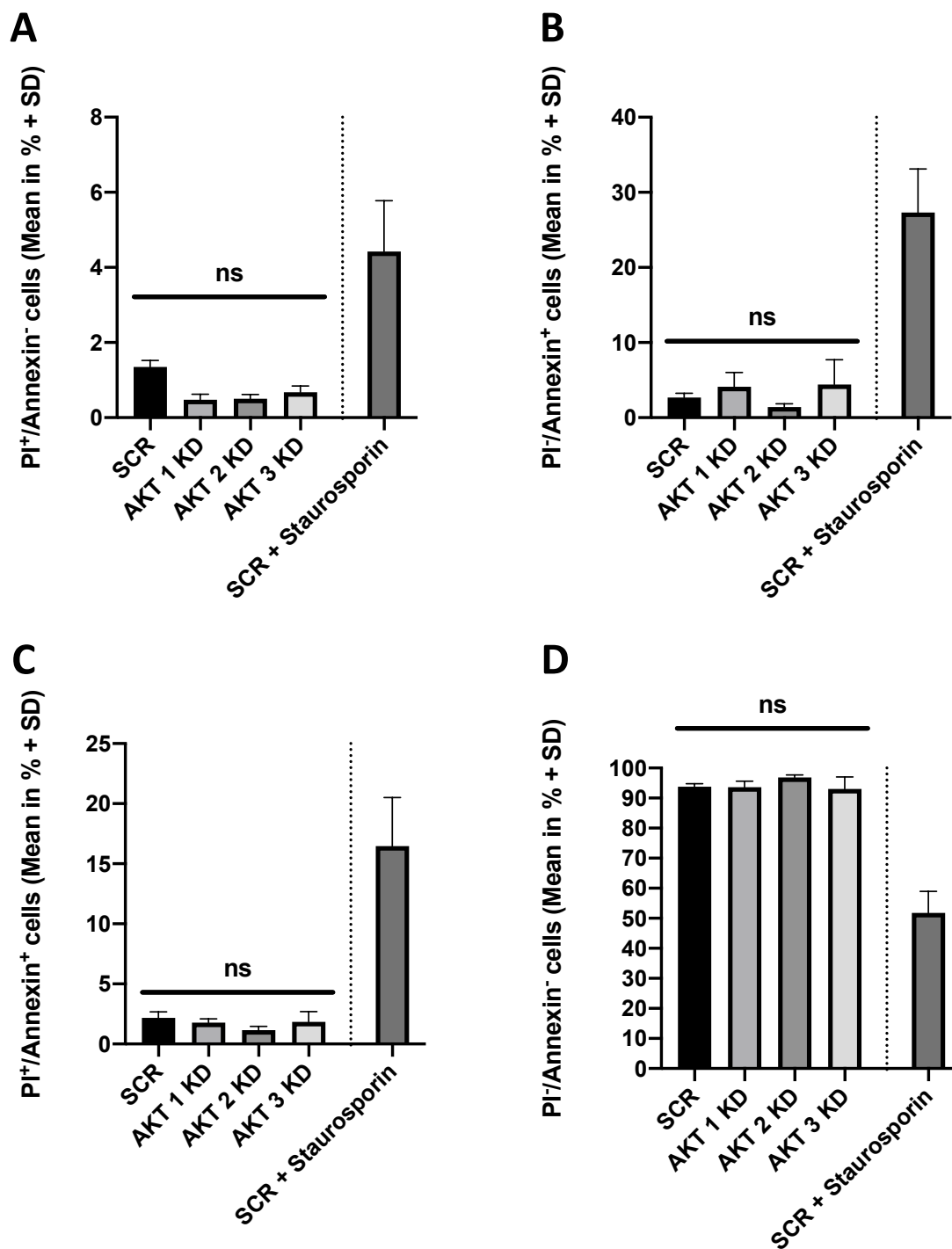
51. Samuels, Y.; Wang, Z.; Bardelli, A.; Silliman, N.; Ptak, J.; Szabo, S.; Yan, H.; Gazdar, A.; Powell, S.M.; Riggins, G.J.; et al. High frequency of mutations of the PIK3CA gene in human cancers. *Science* **2004**, *304*, 554. [[CrossRef](#)] [[PubMed](#)]
52. Markowitz, S.D.; Bertagnolli, M.M. Molecular origins of cancer: Molecular basis of colorectal cancer. *N. Engl. J. Med.* **2009**, *361*, 2449–2460. [[CrossRef](#)] [[PubMed](#)]
53. Wang, X.; Yue, P.; Kim, Y.A.; Fu, H.; Khuri, F.R.; Sun, S.Y. Enhancing mammalian target of rapamycin (mTOR)-targeted cancer therapy by preventing mTOR/raptor inhibition-initiated, mTOR/ricor-independent Akt activation. *Cancer Res.* **2008**, *68*, 7409–7418. [[CrossRef](#)]
54. Ng, K.; Tabernero, J.; Hwang, J.; Bajetta, E.; Sharma, S.; Del Prete, S.A.; Arrowsmith, E.R.; Ryan, D.P.; Sedova, M.; Jin, J.; et al. Phase II study of everolimus in patients with metastatic colorectal adenocarcinoma previously treated with bevacizumab-, fluoropyrimidine-, oxaliplatin-, and irinotecan-based regimens. *Clin. Cancer Res.* **2013**, *19*, 3987–3995. [[CrossRef](#)] [[PubMed](#)]
55. Pearl, M.L.; Dong, H.; Zhao, Q.; Tulley, S.; Dombroff, M.K.; Chen, W.T. iCTC drug resistance (CDR) Testing ex vivo for evaluation of available therapies to treat patients with epithelial ovarian cancer. *Gynecol. Oncol.* **2017**, *147*, 426–432. [[CrossRef](#)]
56. Hinz, N.; Jucker, M. Distinct functions of AKT isoforms in breast cancer: A comprehensive review. *Cell Commun. Signal.* **2019**, *17*, 154. [[CrossRef](#)]
57. Bellacosa, A.; Testa, J.R.; Moore, R.; Larue, L. A portrait of AKT kinases: Human cancer and animal models depict a family with strong individualities. *Cancer Biol. Ther.* **2004**, *3*, 268–275. [[CrossRef](#)]
58. Datta, S.R.; Brunet, A.; Greenberg, M.E. Cellular survival: A play in three Akts. *Genes Dev.* **1999**, *13*, 2905–2927. [[CrossRef](#)]
59. Linnerth-Petrik, N.M.; Santry, L.A.; Moorehead, R.; Jucker, M.; Wootton, S.K.; Petrik, J. Akt isoform specific effects in ovarian cancer progression. *Oncotarget* **2016**, *7*, 74820–74833. [[CrossRef](#)]
60. Grabinski, N.; Bartkowiak, K.; Grupp, K.; Brandt, B.; Pantel, K.; Jucker, M. Distinct functional roles of Akt isoforms for proliferation, survival, migration and EGF-mediated signalling in lung cancer derived disseminated tumor cells. *Cell. Signal.* **2011**, *23*, 1952–1960. [[CrossRef](#)]
61. Soung, Y.H.; Lee, J.W.; Nam, S.W.; Lee, J.Y.; Yoo, N.J.; Lee, S.H. Mutational analysis of AKT1, AKT2 and AKT3 genes in common human carcinomas. *Oncology* **2006**, *70*, 285–289. [[CrossRef](#)]
62. Carpten, J.D.; Faber, A.L.; Horn, C.; Donoho, G.P.; Briggs, S.L.; Robbins, C.M.; Hostetter, G.; Boguslawski, S.; Moses, T.Y.; Savage, S.; et al. A transforming mutation in the pleckstrin homology domain of AKT1 in cancer. *Nature* **2007**, *448*, 439–444. [[CrossRef](#)] [[PubMed](#)]
63. Aktas, B.; Tewes, M.; Fehm, T.; Hauch, S.; Kimmig, R.; Kasimir-Bauer, S. Stem cell and epithelial-mesenchymal transition markers are frequently overexpressed in circulating tumor cells of metastatic breast cancer patients. *Breast Cancer Res.* **2009**, *11*, R46. [[CrossRef](#)] [[PubMed](#)]
64. Heron-Milhavet, L.; Franckhauser, C.; Rana, V.; Berthenet, C.; Fisher, D.; Hemmings, B.A.; Fernandez, A.; Lamb, N.J. Only Akt1 is required for proliferation, while Akt2 promotes cell cycle exit through p21 binding. *Mol. Cell. Biol.* **2006**, *26*, 8267–8280. [[CrossRef](#)]
65. Riggio, M.; Perrone, M.C.; Polo, M.L.; Rodriguez, M.J.; May, M.; Abba, M.; Lanari, C.; Novaro, V. AKT1 and AKT2 isoforms play distinct roles during breast cancer progression through the regulation of specific downstream proteins. *Sci. Rep.* **2017**, *7*, 44244. [[CrossRef](#)] [[PubMed](#)]
66. Agarwal, E.; Robb, C.M.; Smith, L.M.; Brattain, M.G.; Wang, J.; Black, J.D.; Chowdhury, S. Role of Akt2 in regulation of metastasis suppressor 1 expression and colorectal cancer metastasis. *Oncogene* **2017**, *36*, 3104–3118. [[CrossRef](#)] [[PubMed](#)]
67. Haggblad Sahlberg, S.; Mortensen, A.C.; Haglof, J.; Engskog, M.K.; Arvidsson, T.; Pettersson, C.; Glimelius, B.; Stenerlow, B.; Nestor, M. Different functions of AKT1 and AKT2 in molecular pathways, cell migration and metabolism in colon cancer cells. *Int. J. Oncol.* **2017**, *50*, 5–14. [[CrossRef](#)] [[PubMed](#)]
68. Santi, S.A.; Lee, H. Ablation of Akt2 induces autophagy through cell cycle arrest, the downregulation of p70S6K, and the deregulation of mitochondria in MDA-MB231 cells. *PLoS ONE* **2011**, *6*, e14614. [[CrossRef](#)]
69. Koseoglu, S.; Lu, Z.; Kumar, C.; Kirschmeier, P.; Zou, J. AKT1, AKT2 and AKT3-dependent cell survival is cell line-specific and knockdown of all three isoforms selectively induces apoptosis in 20 human tumor cell lines. *Cancer Biol. Ther.* **2007**, *6*, 755–762. [[CrossRef](#)]

70. Grottke, A.; Ewald, F.; Lange, T.; Norz, D.; Herzberger, C.; Bach, J.; Grabinski, N.; Graser, L.; Hoppner, F.; Nashan, B.; et al. Downregulation of AKT3 Increases Migration and Metastasis in Triple Negative Breast Cancer Cells by Upregulating S100A4. *PLoS ONE* **2016**, *11*, e0146370. [[CrossRef](#)]
71. Moreb, J.S. Aldehyde dehydrogenase as a marker for stem cells. *Curr. Stem Cell Res. Ther.* **2008**, *3*, 237–246. [[CrossRef](#)] [[PubMed](#)]
72. Salt, M.B.; Bandyopadhyay, S.; McCormick, F. Epithelial-to-mesenchymal transition rewires the molecular path to PI3K-dependent proliferation. *Cancer Discov.* **2014**, *4*, 186–199. [[CrossRef](#)] [[PubMed](#)]
73. Alix-Panabieres, C.; Mader, S.; Pantel, K. Epithelial-mesenchymal plasticity in circulating tumor cells. *J. Mol. Med.* **2017**, *95*, 133–142. [[CrossRef](#)] [[PubMed](#)]
74. Paterlini-Brechot, P.; Benali, N.L. Circulating tumor cells (CTC) detection: Clinical impact and future directions. *Cancer Lett.* **2007**, *253*, 180–204. [[CrossRef](#)]



© 2020 by the authors. Licensee MDPI, Basel, Switzerland. This article is an open access article distributed under the terms and conditions of the Creative Commons Attribution (CC BY) license (<http://creativecommons.org/licenses/by/4.0/>).

Supplementary Material:



Supplementary Figure S1. Effect of AKT isoform specific knockdowns on apoptosis of CTC-MCC-41 cells. Stable isoform specific knockdowns of AKT and SCR control were subjected to FACS analysis. 2 μ M Staurosporin was used to induce apoptosis as a positive control in CTC-MCC-41 SCR cells. Cells were maintained for 48 hours and then stained with either propidium iodid (PI) (A), Annexin V (FITC) (B) or the combination of both agents (C). Unstained control can be found in (D). The cells were subjected to FACS analysis in biological quadruplicates. The cells were gated for single cells prior to analysis. p values were calculated using one-way ANOVA with Tukey's multiple comparisons test (ns $p > 0.05$). The mean values (n = 4) with standard deviation are shown.

Supplementary Table S1. Primary and secondary antibodies used for western blot analysis.

Target	Manufacturer	Clone / Reference number	Host species	Dilution
AKT1	Cell Signaling Technology	C73H10, #2938	rabbit	1:1000
AKT2	Cell Signaling Technology	5B5, #2964	rabbit	1:1000
AKT3	Cell Signaling Technology	62A8, #3788	rabbit	1:1000
Anti-mouse IgG, HRP- linked	Cell Signaling Technology	#7076	horse	1:5000
Anti-rabbit IgG, HRP- linked	Cell Signaling Technology	#7074	goat	1:5000
HSC70	Santa Cruz Biotechnology	B-6, #sc-7298	mouse	1:1000
p44/42 MAPK (Erk1/2)	Cell Signaling Technology	#9102	rabbit	1:1000
mTOR	Cell Signaling Technology	7C10, #2983	rabbit	1:1000
panAKT	Cell Signaling Technology	11E7, #4685	rabbit	1:1000
pAKT (S473)	Cell Signaling Technology	D9E, #4060	rabbit	1:1000
pmTOR (S2448)	Cell Signaling Technology	#2971	rabbit	1:1000
pp44/42 MAPK (Erk1/2) (T202/Y204)	Cell Signaling Technology	#9101	rabbit	1:1000
pS6 ribosomal protein (S240/S244)	Cell Signaling Technology	D68F8, #5364	rabbit	1:1000
S6 ribosomal protein	Cell Signaling Technology	5G10, #2217	rabbit	1:1000

From: Doris Wang doris.wang@mdpi.com 
Subject: [Cells] Manuscript ID: cells-916678 - Accepted for Publication
Date: 18. September 2020 at 06:34
To: Daniel J. Smit d.smit@uke.de
Cc: Laure Cayrefourcq l-cayrefourcq@chu-montpellier.fr, Marie-Therese Haider m.haider@uke.de, Nico Hinz hinz_nico@gmx.de, Klaus Pantel pantel@uke.de, Catherine Alix-Panabières c-panabieres@chu-montpellier.fr, Manfred Jücker juecker@uke.de, Cells Editorial Office cells@mdpi.com, Doris Wang doris.wang@mdpi.com

Dear Mr. Smit,

We are pleased to inform you that the following paper has been officially accepted for publication:

Manuscript ID: cells-916678
Type of manuscript: Article
Title: High sensitivity of circulating tumor cells derived from a colorectal cancer patient for dual inhibition with AKT and mTOR inhibitors
Authors: Daniel J. Smit, Laure Cayrefourcq, Marie-Therese Haider, Nico Hinz, Klaus Pantel, Catherine Alix-Panabières, Manfred Jücker *
Received: 14 August 2020
E-mails: d.smit@uke.de, l-cayrefourcq@chu-montpellier.fr, m.haider@uke.de, hinz_nico@gmx.de, pantel@uke.de, c-panabieres@chu-montpellier.fr, juecker@uke.de
Submitted to section: Cell Signaling and Regulated Cell Death,
https://www.mdpi.com/journal/cells/sections/signaling_death
https://susy.mdpi.com/user/manuscripts/review_info/d722c76531fe48b4555215d34dc75e34

We will now make the final preparations for publication, then return the manuscript to you for your approval.

If, however, extensive English edits are required to your manuscript, we will need to return the paper requesting improvements throughout.

We encourage you to set up your profile at SciProfiles.com, MDPI's researcher network platform. Articles you publish with MDPI will be linked to your SciProfiles page, where colleagues and peers will be able to see all of your publications, citations, as well as your other academic contributions.

We also invite you to contribute to Encyclopedia (<https://encyclopedia.pub>), a scholarly platform providing accurate information about the latest research results. You can adapt parts of your paper to provide valuable reference information for others in the field.

Kind regards,
Doris Wang
Assistant Editor
Email: doris.wang@mdpi.com

--

MDPI Branch Office, Tianjin
Cells Editorial Office
Skype: live:.cid.f6a2dbb41e1e6d3d
E-mail: cells@mdpi.com
<http://www.mdpi.com/journal/cells/>

Disclaimer: The information and files contained in this message are confidential and intended solely for the use of the individual or entity to whom they are addressed. If you have received this message in error, please notify me and delete this message from your system. You may not copy this message in its entirety or in part, or disclose its contents to anyone.

3. Darstellung der Publikation

3.1 Einleitung

Das kolorektale Karzinom (KRK) ist eine maligne Krebserkrankung des Menschen ausgehend von entarteten Epithelzellen des Kolons oder des Rektums. Der Begriff des KRK dient dabei als Überbegriff für bösartige Neubildungen des Kolons und des Rektums (Muto et al., 1975).

Laut Schätzungen von Bray *et al.* erkrankten weltweit im Jahre 2018 rund 1,8 Millionen Menschen am KRK (Bray et al., 2018). Die Mortalität des KRK liegt laut Schätzungen der Autoren bei etwa 880.000. Aus diesen Daten geht hervor, dass das KRK die dritthäufigste Krebserkrankung ist und die zweithöchste Mortalität von allen Krebsarten aufweist. Insbesondere in entwickelten Staaten innerhalb Europas ist im Vergleich zu Entwicklungsländern eine etwa dreifach höhere Inzidenz zu verzeichnen (Bray et al., 2018).

KRK können sowohl sporadisch, als auch hereditär auftreten. Während die hereditären KRK beispielsweise bei der familiären adenomatösen Polyposis bereits im Kindes- und Jugendalter auftreten können, handelt es sich bei der sporadischen Variante des KRK eher um eine Erkrankung des höheren Lebensalters mit einem mittleren Erkrankungsalter zwischen 72 Jahren bei Männern und 75 Jahren bei Frauen (Kolligs, 2016). Die molekularen Mechanismen der sporadischen Karzinogenese des KRK lassen sich anhand der sogenannten Adenom-Karzinom-Sequenz erklären (Muto et al., 1975, Bortz und Friedrich-Nel, 2016). Die Adenom-Karzinom-Sequenz beschreibt das Entstehen eines invasiven KRK aus initial physiologischem und nicht-dysplastischem Epithel des Kolons oder des Rektums. Vereinfacht lässt sich die Sequenz wie folgt darstellen: Aus dem physiologischen Epithel des Kolons entsteht ein (noch) benignes Adenom, das sich dann durch Akkumulation weiterer onkogener Mutationen und der Inaktivierung von Tumorsuppressor-Genen zu einem invasiven Adenom und schlussendlich zu einem malignen KRK entwickelt (Bortz und Friedrich-Nel, 2016).

Insbesondere onkogene Mutationen in der Signaltransduktion der Zelle spielen dabei eine essentielle Rolle (Armaghany et al., 2012). Hanahan und Weinberg beschrieben unter anderem eine gesteigerte Proliferation, eine Unempfindlichkeit gegenüber anti-apoptotischen Signalen sowie eine Unabhängigkeit von (externen) Wachstumsfaktoren in den von ihnen im Jahre 2000 geprägten „*hallmarks of*

cancer“ (Hanahan und Weinberg, 2000). Zu den Signalwegen, die maßgeblich an der intrazellulären Signaltransduktion des KRK beteiligt sind, gehören unter anderem der PI3K/AKT/mTOR und der RAS/RAF/MEK/MAPK Signalweg.

Der PI3K/AKT/mTOR Signalweg ist ein intrazellulärer Signalweg, der essentielle molekulare Prozesse, wie beispielsweise die Proliferation, die Angiogenese, die Apoptose und die Migration reguliert (Manning und Toker, 2017). Die konstitutive Aktivierung dieses Signalweges ist häufig in Krebserkrankungen zu beobachten (Osaki et al., 2004). Die Folge einer konstitutiven Aktivierung des Signalweges, die häufig im Rahmen von Mutationen auftritt, beinhaltet die Entkoppelung von der physiologischen Regulation, ein gesteigertes Überleben der Zelle und die Erhöhung des metastatischen Potentials (Porta et al., 2014, Hanahan und Weinberg, 2011). Durch die Regulation von vielfältigen potentiell onkogenen Prozessen wurde der PI3K/AKT/mTOR Signalweg bereits früh als ein möglicher Ansatzpunkt für eine zielgerichtete Tumorthherapie entdeckt (Porta et al., 2014). Für das KRK konnte in Studien gezeigt werden, dass sich in annähernd der Hälfte der untersuchten primären KRK eine starke Phosphorylierung von *AKT8 virus oncogene cellular homolog* (AKT, synonym Proteinkinase B, PKB) an Serin 473 zeigte (Itoh et al., 2002). Die Autoren konnten darüber hinaus eine negative Prognose in Bezug auf die Wachstumsrate, die Apoptose, die lokoregionale Metastasierung und auch auf die Fernmetastasierung aus der starken Phosphorylierung von AKT an Serin 473 für Patienten mit KRK ableiten (Itoh et al., 2002).

Die Therapie des KRK erfolgt stadienabhängig nach dem Ausbreitungsgrad des Primarius. Während bei kleinen, nicht metastasierten KRK ohne Lymphknotenmetastasierung und Fernmetastasierung (bis T2 N0 M0) die alleinige chirurgische Versorgung im Vordergrund steht, kommen bei größeren oder metastasierten Tumoren zusätzlich zytotoxische Substanzen zum Einsatz. Neben den konventionellen Chemotherapeutika wie beispielsweise 5-Fluorouracil, Oxaliplatin, Irinotecan und Capecitabin stehen seit einigen Jahren auch zielgerichtete Therapien in Form von monoklonalen Antikörpern gegen den *Epidermal Growth Factor Receptor* (EGFR) und den *Vascular Endothelial Growth Factor* (VEGF) für die Behandlung des metastasierten KRK zur Verfügung (AWMF, 2019). In den letzten Jahren gewannen zielgerichtete Therapien immer mehr an Aufsehen und zahlreiche Studien wurden in der Vergangenheit bereits durchgeführt.

MK2206 ist ein allosterischer Inhibitor aller AKT-Isoformen, der die Phosphorylierungen an Serin 473 und Threonin 308 verhindert und somit die Aktivierung von AKT inhibiert (Yan, 2009). Eine Phosphorylierung an beiden Stellen ist notwendig für die vollständige Aktivierung von AKT (Sarbasov et al., 2005). RAD001 ist ein allosterischer mTOR Inhibitor der, im Gegensatz zur Ursubstanz Rapamycin, sowohl den mTOR Komplex 1, als auch den Rapamycin-insensitiven mTOR Komplex 2 hemmt (Sarbasov et al., 2004, Sarbasov et al., 2005). RAD001 ist bereits für die Verwendung zur Immunsuppression zugelassen (Macdonald, 2007). Des Weiteren ist RAD001 für die Therapie von fortgeschrittenen Tumoren der Brust, der Niere und von neuroendokrinen Tumoren zugelassen (FDA, 2009). MK2206 befindet sich hingegen noch im Prozess der Zulassung (zahlreiche Phase II Studien) (Clinical Trials Database, 2020).

Im Rahmen der Metastasierung kommt es zu einem Verlust von Zell-Zell-Kontakten und zur Absiedelung von Tumorzellen in den Blutstrom (Hanahan und Weinberg, 2000, Alix-Panabieres und Pantel, 2013). Jene Zellen, die den Kontakt zum Primarius verloren haben und sich im Blut befinden werden zirkulierende Tumorzellen (engl. *circulating tumor cells*, CTCs) genannt. Es konnte gezeigt werden, dass CTCs maßgeblich an der Initiierung der Metastasierung-Kaskade beteiligt sind und die Fähigkeit besitzen entfernte Metastasen zu bilden (Alix-Panabieres et al., 2012, Koch et al., 2020, Zhang et al., 2013). In den letzten Jahren konnten nach Etablierung von kommerziellen Methoden zur CTC-Gewinnung („*liquid biopsy*“ (Alix-Panabieres und Pantel, 2013)) erste Kulturen dieser Zellen etabliert werden. Im Jahre 2015 konnten Cayrefourcq *et al.* die erste stabile CTC-Zelllinie, genannt CTC-MCC-41, aus dem Blut eines Patienten mit KRK etablieren (Cayrefourcq et al., 2015). Während die molekularen Signaturen von Tumorzellen innerhalb des Primarius bereits gut untersucht sind, fehlt es an der funktionellen Charakterisierung eben jener Zellen, die die Metastasierung vermitteln.

Ziel dieser Arbeit war es daher, die vorliegende CTC-MCC-41 Zelllinie funktionell hinsichtlich des PI3K/AKT/mTOR-Signalweges und der funktionellen Relevanz der AKT-Isoformen (AKT1, AKT2 und AKT3) zu charakterisieren. Des Weiteren wurde die Effektivität einer Hemmung von zirkulierenden Tumorzellen unter Verwendung des AKT-Inhibitors MK2206 und des mTOR-Inhibitors RAD001 *in vitro* untersucht. Die Ergebnisse dieser Arbeit könnten dabei als Grundlage für die Entwicklung neuer

zielgerichteter Therapien gegen zirkulierende Tumorzellen dienen und eine Blockade der Metastasierung des KRK erzielen.

3.2 Ergebnisse

In unseren Versuchen konnten wir eine starke Expression von phospho-AKT (S473) und phospho-S6 (S240/S244) in der CTC-MCC-41 Zelllinie detektieren. Diese Beobachtung wurde zum Anlass genommen, die Sensitivität der zirkulierenden Tumorzelllinie für die Therapie mit AKT- und mTOR-Inhibitoren zu bestimmen. In der Western Blot Analyse zeigt sich eine komplette Suppression von phospho-AKT (S473) nach 24-stündiger alleiniger Behandlung mit dem AKT Inhibitor MK2206 und ferner eine reduzierte Expression von phospho-S6. Während die Behandlung mit dem AKT Inhibitor ebenfalls Einfluss auf das weiter unten in der Signalkaskade lokalisierte phospho-S6 genommen hat, zeigt sich nach mTOR Inhibition lediglich eine deutlich verminderte Expression von phospho-S6 (S240/S244), jedoch kein Effekt auf das oberhalb gelegene phospho-AKT (S473). Eine Kombinationsbehandlung mit einer simultanen Hemmung von AKT und mTOR hingegen führt zu einer beinahe vollständigen Suppression der Expression von phospho-AKT (S473) und phospho-S6 (S240/S244).

Im Rahmen der Behandlung der Zelllinie mit den Inhibitoren zeigte sich zudem eine signifikante Hemmung der Proliferation der Zelllinie ab einer Konzentration von 250 nM MK2206 (IC_{50} : 186 nM) bzw. 6,3 nM RAD001 (IC_{50} : 2,6 nM). Eine Kombination der beiden Inhibitoren war dabei der Einzeltherapie überlegen und zeigte eine verstärkte Hemmung der Zelllinie und synergistische Effekte. Die benötigte Konzentration für eine signifikante Hemmung von MK2206 konnte durch die Kombinationsbehandlung von 250 nM auf 62,50 nM gesenkt werden, bei gleichbleibender Dosis von RAD001 mit 6,3 nM.

Die stärksten synergistischen Effekte, berechnet nach der von Chou und Talalay etablierten Methode, konnten in höheren Dosen im Bereich von 250 nM (MK2206) / 25 nM (RAD001) bis 1000 nM (MK2206) / 100 nM (RAD001) erzielt werden.

Ein weiterer Aspekt, den wir in unserer Veröffentlichung zeigen konnten, ist das Verhalten der CTC-MCC-41 in der Zellkultur. Die Untersuchung der Signaltransduktion in den adhären und in Suspension wachsenden Zellen ergab eine signifikant niedrigere phospho-AKT (S473) Expression in den Suspensions-

Zellen im Vergleich zur Gesamtheit der Zellen und den adhären-wachsenden Zellen.

Die lentivirale Transduktion von shRNA gegen AKT1, AKT2 und AKT3 konnte erfolgreich durchgeführt werden. Es konnte eine starke Verminderung der AKT1 (89%) -, und AKT2-Expression (91%) durch den lentiviralen shRNA-vermittelten Knockdown erreicht werden. Im Rahmen der weiteren Western Blot-Analyse zeigte sich, dass die parentale CTC-MCC-41 Zelllinie keine AKT3-Expression aufweist. Weiterhin zeigte sich ein signifikant vermindertes Zellwachstum nach Knockdown von AKT1 und AKT2, jedoch kein signifikanter Unterschied nach AKT3-Knockdown. Eine Messung der Apoptose der AKT Knockdown-Mutanten der CTC-MCC-41 ergab keine signifikanten Unterschiede zwischen den Gruppen, sodass die beobachteten Effekte auf das Zellwachstum nach AKT1- und AKT2-Knockdown nicht auf eine verstärkte Apoptose zurückzuführen sind.

3.3 Diskussion

In unserer Studie konnten wir eine entscheidende Rolle des PI3K/AKT/mTOR Signalweges in den CTCs eines Patienten mit KRK beobachten (Smit et al., 2020). Obwohl die Zelllinie keinerlei Mutationen in den für die PI3K, AKT oder PTEN kodierenden Genen aufwies (Soler et al., 2018), zeigte sich eine ausgeprägte Sensitivität gegenüber AKT- und mTOR-Inhibitoren. Die duale Hemmung von AKT und mTOR oder anderer Proteine innerhalb des PI3K/AKT/mTOR Signalweges konnte in vorherigen Studien für ortsständige Tumorzellen bereits als eine erfolgsversprechende Therapieoption in präklinischen Studien in verschiedenen Krebsarten sowohl *in vitro* (Schulte et al., 2020), als auch *in vivo* evaluiert werden (Ewald et al., 2013). Der Vorteil der dualen Inhibition von AKT und mTOR liegt darin, dass eine Feedback-Aktivierung von AKT nach der Hemmung von mTOR durch die zusätzliche Hemmung von AKT verhindert wird (Sun et al., 2005). Insbesondere für die alleinige Hemmung von mTOR wurden starke konsekutive Aktivierungen der weiter oberhalb in der Signaltransduktion gelegenen Kinase AKT beobachtet (Wang et al., 2008). Im Falle der mTOR-Inhibition durch RAD001 konnte so durch die zusätzliche Hemmung von AKT durch MK2206 eine synergistische Verstärkung der Hemmung der CTC-MCC-41-Zelllinie erreicht werden. Darüber hinaus wird die komplexe Signaltransduktion innerhalb des PI3K/AKT/mTOR-Signalweges durch

die duale Inhibition stärker eingeschränkt, als dies bei einer singulären Hemmung nur eines Proteins der Fall wäre.

Die Hemmung von CTCs stellt eine neue Therapieoption dar, die noch nicht ausreichend untersucht wurde. Dies lässt sich unter anderem darauf zurückführen, dass die Gewinnung und insbesondere die Langzeit-Kultivierung von CTCs sich als äußerst schwierig darstellt und bisher nur von wenigen Arbeitsgruppen weltweit erreicht wurde (Pantel und Alix-Panabieres, 2016, Pantel und Alix-Panabieres, 2015). Ein weiterer Aspekt, den wir in unserer Veröffentlichung diskutieren, ist das Verhalten der CTC-MCC-41 in der Zellkultur. Kultiviert man die Gesamtheit der Zellen fällt auf, dass einige ein adhärentes Wachstum zeigen, während andere in Suspension bleiben. Eine Trennung der beiden Fraktionen führt zu einer Wiederherstellung des initialen Phänotypus mit adhärent und in Suspension wachsenden Zellen. In der Vergangenheit wurden häufig Stammzell-ähnliche Eigenschaften, eine hohe Plastizität von CTCs und ein gemischter epithelialer-mesenchymaler Phänotyp beschrieben (Alix-Panabieres et al., 2017, Cayrefourcq et al., 2015, Yu et al., 2013). Ausgehend von diesen Erkenntnissen haben wir uns mit der Signaltransduktion in den adhärent und in Suspension wachsenden Zellen befasst und konnten eine signifikant niedrigere phospho-AKT (S473) Expression in den Suspensions-Zellen detektieren. Eine mögliche Erklärung für die erniedrigte Expression von phospho-AKT könnte dabei eine durchgemachte epithelial-mesenchymale Transition (EMT) sein. Ausgehend von diesem Modell könnten die adhärent wachsenden Zellen dabei den epithelialen Phänotypen und die in Suspension wachsenden Zellen dabei den sich im Blutstrom befindlichen, eher mesenchymalen Phänotypen widerspiegeln. Da sich die differentielle Regulation allein in der phospho-AKT Expression, aber nicht in anderen essentiellen Proteinen des PI3K/AKT/mTOR- und RAS/RAF/MEK/MAPK-Signalweges zeigt, könnten diese Ergebnisse eben diesen gemischten epithelialen/mesenchymalen Phänotyp der CTCs auf molekularer Ebene widerspiegeln. Untermuert wird diese mögliche Erklärung durch eine Veröffentlichung von Salt *et al.*, in der die Autoren eine EMT in einer Lungenkarzinom-Zelllinie initiierten und ebenfalls in der Western Blot Analyse eine verminderte Expression von phospho-AKT detektieren konnten (Salt et al., 2014).

Zusammenfassend konnten wir in unserer Publikation die hohe Relevanz des PI3K/AKT/mTOR-Signalweges in der CTC-MCC-41 Zelllinie zeigen und AKT und

mTOR als zwei mögliche Angriffspunkte für eine Inhibitor-Therapie in eben dieser Zelllinie identifizieren. Die zielgerichtete Therapie von zirkulierenden Tumorzellen könnte dabei einen neuen Ansatz in der Krebstherapie darstellen, der eine Metastasierung verhindern und somit gegebenenfalls Therapien in kurativer Intention ermöglichen kann.

3.4 Material und Methoden

Die zirkulierende Tumorzelllinie „CTC-MCC-41“ (Cayrefourcq et al., 2015) eines Kolonkarzinom-Patienten wurde genutzt, um die Rolle des PI3K/AKT/mTOR Signalweges in zirkulierenden Tumorzellen zu untersuchen. Zunächst wurden mittels Western Blot die Expression von AKT, phospho-AKT (S473), S6 und phospho-S6 (S240/S244) innerhalb des PI3K/AKT/mTOR Signalweges bestimmt. Anschließend wurde die Sensitivität der CTC-MCC-41-Zelllinie für die Inhibition von AKT und mTOR mit Hilfe der Inhibitoren MK2206 (#S1078, Selleck Chemicals, Houston, USA) und RAD001 (#S1120, Selleck Chemicals, Houston, USA) ermittelt. Dazu wurden Zellen der CTC-MCC-41 Zelllinie ausgesät und das Zellkultur-Medium mit dem AKT Inhibitor MK2206, dem mTOR Inhibitor RAD001 oder der Kombination der beiden Inhibitoren (Ratio 10:1, 1 nM / 0,1 nM bis 1000 nM / 100 nM (MK2206/RAD001)) versetzt. Anschließend wurde der Einfluss der Inhibitoren im Hinblick auf die Proliferation der Zelllinie über eine Konfluenz-Messung mit dem *IncuCyte*[®] *Zoom Live Cell Analysis System* (Essen BioSciences, Ann Arbor, USA) ausgewertet. Aus diesen Daten wurden dann die mittlere inhibitorische Konzentration (IC₅₀) und die Stärke der synergistischen Effekte an anhand der kombinatorischen Indices (engl. *CI values, combination index*) der Kombination der beiden Hemmstoffe nach der Chou und Talalay Methode (Chou, 2006, Chou, 2010) bestimmt. Die statistische Auswertung der Daten erfolgte mit der Software GraphPad Prism Version 8.4.1 (einfaktorielle Varianzanalyse „ANOVA“ mit Dunnett Post-hoc Test, $p < 0,05$) (GraphPad Software Inc., San Diego, USA).

Aufgrund des morphologisch unterschiedlichen Wachstums der CTC-MCC-41 Zelllinie wurden die in Suspension wachsenden Zellen und die adhärent wachsenden Zellen separiert und mittels Western Blot Analyse im Hinblick auf die Signaltransduktion des PI3K/AKT/mTOR- und RAS/RAF/MEK/MAPK-Signalweges

untersucht. Dazu wurde die Expression von phospho-AKT (S473), AKT, phospho-mTOR (S2448), mTOR, phospho-S6 (S240/S244), S6, phospho-ERK1/2 (T202/Y204) und ERK1/2 in der CTC-MCC-41 Zelllinie und einer weiteren Kontroll-Zelllinie, nämlich der HT29-Zelllinie, untersucht.

Um die funktionelle Rolle der verschiedenen AKT Isoformen zu untersuchen, wurden stabile AKT-Isoform-spezifische Knockdown-Mutanten mittels lentiviraler Transduktion von shRNA gegen AKT1, AKT2 oder AKT3 der CTC-MCC-41-Zelllinie erstellt. Anschließend wurde der Erfolg der Transduktion mittels Western Blot-Analyse mit Hilfe von Antikörpern gegen AKT1, AKT2 und AKT3 überprüft. Nach Bestätigung der gelungenen Runterregulation wurde ein Proliferations-Versuch mit dem *IncuCyte*[®] *Zoom Live Cell Analysis System* durchgeführt.

Darüber hinaus wurde mittels durchflusszytometrischer Methoden auf der BD LSR Fortessa (BD Biosciences, Franklin Lakes, USA) nach Propidium-Iodid und Annexin V Färbung (#556547, BD Biosciences, Franklin Lakes, USA) die Apoptose der Zellen nach AKT-Isoform-spezifischem Knockdown untersucht. Die Auswertung der durchflusszytometrischen Daten erfolgte mit FlowJo Version 10.6.1 (BD Biosciences, Franklin Lakes, USA) und GraphPad Prism Version 8.4.1 (einfaktorielle Varianzanalyse „ANOVA“ mit Tukey Post-hoc Test, $p < 0,05$).

3.5 Literaturverzeichnis

- ALIX-PANABIERES, C., MADER, S. & PANTEL, K. 2017. Epithelial-mesenchymal plasticity in circulating tumor cells. *J Mol Med (Berl)*, 95, 133-142.
- ALIX-PANABIERES, C. & PANTEL, K. 2013. Circulating tumor cells: liquid biopsy of cancer. *Clin Chem*, 59, 110-8.
- ALIX-PANABIERES, C., SCHWARZENBACH, H. & PANTEL, K. 2012. Circulating tumor cells and circulating tumor DNA. *Annu Rev Med*, 63, 199-215.
- ARMAGHANY, T., WILSON, J. D., CHU, Q. & MILLS, G. 2012. Genetic alterations in colorectal cancer. *Gastrointest Cancer Res*, 5, 19-27.
- AWMF. 2019. *S3-Leitlinie Kolorektales Karzinom Langversion 2.1* [Online]. AWMF. Verfügbar unter: <http://www.leitlinienprogramm-onkologie.de/leitlinien/kolorektales-karzinom/> [abgerufen am 17.10.2020].
- BORTZ, J. H. & FRIEDRICH-NEL, H. 2016. The Adenoma–Carcinoma Sequence, Management and Treatment of Colon Cancer. *In*: BORTZ, J. H.,

- RAMLAUL, A. & MUNRO, L. (eds.) *CT Colonography for Radiographers: A Guide to Performance and Image Interpretation*. Cham: Springer International Publishing.
- BRAY, F., FERLAY, J., SOERJOMATARAM, I., SIEGEL, R. L., TORRE, L. A. & JEMAL, A. 2018. Global cancer statistics 2018: GLOBOCAN estimates of incidence and mortality worldwide for 36 cancers in 185 countries. *CA Cancer J Clin*, 68, 394-424.
- CAYREFOURCQ, L., MAZARD, T., JOOSSE, S., SOLASSOL, J., RAMOS, J., ASSENAT, E., SCHUMACHER, U., COSTES, V., MAUDELONDE, T., PANTEL, K. & ALIX-PANABIERES, C. 2015. Establishment and characterization of a cell line from human circulating colon cancer cells. *Cancer Res*, 75, 892-901.
- CHOU, T. C. 2006. Theoretical basis, experimental design, and computerized simulation of synergism and antagonism in drug combination studies. *Pharmacol Rev*, 58, 621-81.
- CHOU, T. C. 2010. Drug combination studies and their synergy quantification using the Chou-Talalay method. *Cancer Res*, 70, 440-6.
- CLINICAL TRIALS DATABASE. 2020. *MK2206 clinical trials* [Online]. U.S. National Library of Medicine. Verfügbar unter: <https://clinicaltrials.gov/ct2/results?cond=&term=MK2206> [abgerufen am 19.10.2020].
- EWALD, F., GRABINSKI, N., GROTTKE, A., WINDHORST, S., NORZ, D., CARSTENSEN, L., STAUFER, K., HOFMANN, B. T., DIEHL, F., DAVID, K., SCHUMACHER, U., NASHAN, B. & JUCKER, M. 2013. Combined targeting of AKT and mTOR using MK-2206 and RAD001 is synergistic in the treatment of cholangiocarcinoma. *Int J Cancer*, 133, 2065-76.
- FDA. 2009. *Prescribing Information: Everolimus* [Online]. Verfügbar unter: https://www.accessdata.fda.gov/drugsatfda_docs/label/2016/022334s036lbl.pdf [abgerufen am 19.10.2020].
- HANAHAN, D. & WEINBERG, R. A. 2000. The hallmarks of cancer. *Cell*, 100, 57-70.
- HANAHAN, D. & WEINBERG, R. A. 2011. Hallmarks of cancer: the next generation. *Cell*, 144, 646-74.

- ITOH, N., SEMBA, S., ITO, M., TAKEDA, H., KAWATA, S. & YAMAKAWA, M. 2002. Phosphorylation of Akt/PKB is required for suppression of cancer cell apoptosis and tumor progression in human colorectal carcinoma. *Cancer*, 94, 3127-34.
- KOCH, C., KUSKE, A., JOOSSE, S. A., YIGIT, G., SFLOMOS, G., THALER, S., SMIT, D. J., WERNER, S., BORGMANN, K., GARTNER, S., MOSSAHEBI MOHAMMADI, P., BATTISTA, L., CAYREFOURCQ, L., ALTMULLER, J., SALINAS-RIESTER, G., RAITHATHA, K., ZIBAT, A., GOY, Y., OTT, L., BARTKOWIAK, K., TAN, T. Z., ZHOU, Q., SPEICHER, M. R., MULLER, V., GORGES, T. M., JUCKER, M., THIERY, J. P., BRISKEN, C., RIETHDORF, S., ALIX-PANABIERES, C. & PANTEL, K. 2020. Characterization of circulating breast cancer cells with tumorigenic and metastatic capacity. *EMBO Mol Med*, 12, e11908.
- KOLLIGS, F. T. 2016. Diagnostics and Epidemiology of Colorectal Cancer. *Visc Med*, 32, 158-64.
- MACDONALD, A. S. 2007. Use of mTOR inhibitors in human organ transplantation. *Expert Rev Clin Immunol*, 3, 423-36.
- MANNING, B. D. & TOKER, A. 2017. AKT/PKB Signaling: Navigating the Network. *Cell*, 169, 381-405.
- MUTO, T., BUSSEY, H. J. & MORSON, B. C. 1975. The evolution of cancer of the colon and rectum. *Cancer*, 36, 2251-70.
- OSAKI, M., OSHIMURA, M. & ITO, H. 2004. PI3K-Akt pathway: its functions and alterations in human cancer. *Apoptosis*, 9, 667-76.
- PANTEL, K. & ALIX-PANABIERES, C. 2015. Cell lines from circulating tumor cells. *Oncoscience*, 2, 815-6.
- PANTEL, K. & ALIX-PANABIERES, C. 2016. Functional Studies on Viable Circulating Tumor Cells. *Clin Chem*, 62, 328-34.
- PORTA, C., PAGLINO, C. & MOSCA, A. 2014. Targeting PI3K/Akt/mTOR Signaling in Cancer. *Front Oncol*, 4, 64.
- SALT, M. B., BANDYOPADHYAY, S. & MCCORMICK, F. 2014. Epithelial-to-mesenchymal transition rewires the molecular path to PI3K-dependent proliferation. *Cancer Discov*, 4, 186-99.
- SARBASSOV, D. D., ALI, S. M., KIM, D. H., GUERTIN, D. A., LATEK, R. R., ERDJUMENT-BROMAGE, H., TEMPST, P. & SABATINI, D. M. 2004.

- Rictor, a novel binding partner of mTOR, defines a rapamycin-insensitive and raptor-independent pathway that regulates the cytoskeleton. *Curr Biol*, 14, 1296-302.
- SARBASSOV, D. D., GUERTIN, D. A., ALI, S. M. & SABATINI, D. M. 2005. Phosphorylation and regulation of Akt/PKB by the rictor-mTOR complex. *Science*, 307, 1098-101.
- SCHULTE, A., EWALD, F., SPYRA, M., SMIT, D. J., JIANG, W., SALAMON, J., JÜCKER, M. & MAUTNER, V.-F. 2020. Combined Targeting of AKT and mTOR Inhibits Proliferation of Human NF1-Associated Malignant Peripheral Nerve Sheath Tumour Cells In Vitro but not in a Xenograft Mouse Model In Vivo. *International Journal of Molecular Sciences*, 21, 1548.
- SMIT, D. J., CAYREFOURCQ, L., HAIDER, M. T., HINZ, N., PANTEL, K., ALIX-PANABIERES, C. & JUCKER, M. 2020. High Sensitivity of Circulating Tumor Cells Derived from a Colorectal Cancer Patient for Dual Inhibition with AKT and mTOR Inhibitors. *Cells*, 9, 2129.
- SOLER, A., CAYREFOURCQ, L., MAZARD, T., BABAYAN, A., LAMY, P. J., ASSOU, S., ASSENAT, E., PANTEL, K. & ALIX-PANABIERES, C. 2018. Autologous cell lines from circulating colon cancer cells captured from sequential liquid biopsies as model to study therapy-driven tumor changes. *Sci Rep*, 8, 15931.
- SUN, S. Y., ROSENBERG, L. M., WANG, X., ZHOU, Z., YUE, P., FU, H. & KHURI, F. R. 2005. Activation of Akt and eIF4E survival pathways by rapamycin-mediated mammalian target of rapamycin inhibition. *Cancer Res*, 65, 7052-8.
- WANG, X., YUE, P., KIM, Y. A., FU, H., KHURI, F. R. & SUN, S. Y. 2008. Enhancing mammalian target of rapamycin (mTOR)-targeted cancer therapy by preventing mTOR/raptor inhibition-initiated, mTOR/rictor-independent Akt activation. *Cancer Res*, 68, 7409-18.
- YAN, L. 2009. Abstract #DDT01-1: MK-2206: A potent oral allosteric AKT inhibitor. *Cancer Research*, 69, DDT01-1.
- YU, M., BARDIA, A., WITTNER, B. S., STOTT, S. L., SMAS, M. E., TING, D. T., ISAKOFF, S. J., CICILIANO, J. C., WELLS, M. N., SHAH, A. M., CONCANNON, K. F., DONALDSON, M. C., SEQUIST, L. V., BRACHTEL, E., SGROI, D., BASELGA, J., RAMASWAMY, S., TONER, M., HABER, D.

A. & MAHESWARAN, S. 2013. Circulating breast tumor cells exhibit dynamic changes in epithelial and mesenchymal composition. *Science*, 339, 580-4.

ZHANG, L., RIDGWAY, L. D., WETZEL, M. D., NGO, J., YIN, W., KUMAR, D., GOODMAN, J. C., GROVES, M. D. & MARCHETTI, D. 2013. The identification and characterization of breast cancer CTCs competent for brain metastasis. *Sci Transl Med*, 5, 180ra48.

3.6 Abkürzungsverzeichnis

AKT	<i>AKT8 virus oncogene cellular homolog</i>
ANOVA	<i>Analysis of variance</i>
AWMF	Arbeitsgemeinschaft der Wissenschaftlichen Medizinischen Fachgesellschaften
CI	<i>Combination index</i>
CTC	<i>Circulating tumor cell</i>
EGFR	<i>Epidermal Growth Factor Receptor</i>
EMT	Epitheliale-mesenchymale Transition
IC50	Mittlere inhibitorische Konzentration
KRK	Kolorektales Karzinom
MAPK	<i>Mitogen-activated protein kinase</i>
MEK	<i>MAPK/Erk kinase</i>
mTOR	<i>Mechanistic Target of Rapamycin</i>
nM	Nanomolar
PI3K	Phosphoinositid-3-Kinase
RAF	<i>Rat accelerated fibrosarcoma</i>
RAS	<i>Rat sarcoma</i>
shRNA	<i>Small hairpin ribonucleic acid</i>
VEGF	<i>Vascular Endothelial Growth Factor</i>
WHO	<i>World Health Organization</i>

4. Zusammenfassung / Summary

In dieser Arbeit wurde die Relevanz des PI3K/AKT/mTOR-Signalweges in zirkulierenden Tumorzellen von einem Patienten mit kolorektalem Karzinom untersucht. Die aus dem Blut des Patienten isolierte Zelllinie, genannt CTC-MCC-41, zeigte dabei eine hohe Sensitivität für die Hemmung von AKT und mTOR mittels MK2206 und RAD001 im nanomolaren Bereich. Zudem konnten starke bis sehr starke synergistische Effekte auf die Proliferation der CTC-MCC-41-Zelllinie durch die duale Hemmung von AKT und mTOR beobachtet werden. Im Weiteren konnten wir eine starke Aktivität des PI3K/AKT/mTOR-Signalweges über die Expression von pAKT (S473) und pS6 (S240/S244) in der Zelllinie nachweisen. Interessanterweise ließ sich dabei in den in Suspension wachsenden Zellen im Vergleich zu den adhären wachsenden Zellen der CTC-MCC-41 eine runterregulierte Expression von pAKT (S473) darstellen. Die Proliferation der CTC-MCC-41-Zellen konnte nach einem lentiviral vermittelten Knockdown von AKT1 und AKT2 signifikant reduziert werden. Insgesamt zeigen sich in den Experimenten erste Anhaltspunkte, die dafürsprechen, dass die therapeutische Hemmung des PI3K/AKT/mTOR-Signalweges in zirkulierenden Tumorzellen eine neue mögliche Therapiestrategie darstellt, um die Metastasierung des kolorektalen Karzinoms zu hemmen.

The PI3K/AKT/mTOR axis plays a crucial role in colorectal carcinoma (CRC). Here, we demonstrate a pivotal role of this signaling pathway in the CTC-MCC-41 line, which is derived from a patient with colorectal cancer. CTC-MCC-41 is highly sensitive for dual inhibition of AKT/mTOR using MK2206 and RAD001 *in vitro* and exhibits strong synergistic effects within the nanomolar range in therapeutic drug sensitivity screening assays. Strong activation of the PI3K/AKT/mTOR pathway indicated by the phosphorylation of AKT and downstream substrates could be observed. Furthermore, AKT isoform specific knockdown of AKT1 and AKT2 significantly diminished proliferation of the cell line in comparison to control, suggesting a crucial role of the PI3K/AKT/mTOR pathway in CTC-MCC-41. Therefore, these data may indicate that the inhibition of PI3K/AKT/mTOR pathway in CTCs may be a valuable target to block metastatic progression in CRC patients that should be confirmed in further xenograft mouse models *in vivo*.

5. Erklärung des Eigenanteils an der Publikation

Die Studie wurde von mir, Professor Dr. rer. nat. Manfred Jücker, Professor Dr. med. Klaus Pantel und Dr. Catherine Alix-Panabières gemeinsam geplant. Die Experimente wurden allesamt eigenständig von mir durchgeführt.

Im Rahmen der Durchflusszytometrie erhielt ich technische Unterstützung bei der Messung und der Auswertung durch die FACS Core Facility des Universitätsklinikums Hamburg-Eppendorf.

Die in der Publikation genutzte zirkulierende Tumorzelllinie, genannt „CTC-MCC-41“, wurde von Dr. Laure Cayrefourcq und Dr. Catherine Alix-Panabières (Universität Montpellier, Frankreich) etabliert und mir freundlicherweise für die Untersuchungen zur Verfügung gestellt.

Die Interpretation der erhobenen Daten erfolgte gemeinsam mit Professor Dr. rer. nat. Manfred Jücker. Das Manuskript wurde in seiner ersten Fassung von mir geschrieben und von Professor Dr. rer. nat. Manfred Jücker überarbeitet. Die weiteren Koautoren (Dr. Laure Cayrefourcq, Dr. Marie-Therese Haider, Nico Hinz, Professor Dr. med. Klaus Pantel und Dr. Catherine Alix-Panabières) waren an der kritischen Überarbeitung des Manuskriptes beteiligt.

Darüber hinausgehende Hilfen wurden nicht in Anspruch genommen.

6. Danksagung

Ich bedanke mich bei Herrn Professor Dr. Manfred Jücker für die Überlassung des spannenden Themas und die gute Zusammenarbeit in den letzten Jahren. Des Weiteren möchte ich mich bei allen Labormitgliedern der AG Jücker und den Institutsmitgliedern des Instituts für Biochemie und Signaltransduktion für die stetig gute Zusammenarbeit bedanken.

Ein weiterer Dank gilt den Mitarbeitern der FACS Core Facility des Universitätsklinikums Hamburg-Eppendorf für die technische Unterstützung im Rahmen der Apoptose-Messung. Zudem danke ich Frau Dr. Laure Cayrefourcq und Frau Dr. Catherine Alix-Panabières für die Überlassung der CTC-MCC-41-Zelllinie.

Herrn Professor Dr. med. Udo Schumacher möchte ich für die Erstellung des Zweitgutachtens zu dieser Arbeit danken.

7. Lebenslauf

Lebenslauf aus datenschutzrechtlichen Gründen nicht enthalten.

8. Vollständige Publikationsliste

Stand: 15.01.2021

Smit, D. J.; Cayrefourcq L.; Haider, M.-T.; Hinz, N.; Pantel, K.; Alix-Panabières, C.; Jücker, M. *High Sensitivity of Circulating Tumor Cells Derived from a Colorectal Cancer Patient for Dual Inhibition with AKT and mTOR Inhibitors*. **Cells** 2020, 9, 2129. doi: 10.3390/cells9092129

Voß, H.#; Wurlitzer, M.#; **Smit, D.J.#**; Ewald, F.#; Alawi, M.; Spohn, M.; Omid, M.; David, K.; Juhl, H.; Simon, R.; Sauter, G.; Fischer, L.; Izbicki J.R.; Nashan, B.; Schlüter, H.; Jücker, M. *Differential expression of extracellular matrix proteins in three recurrent liver metastases of a patient with colorectal cancer*. **Clin. Exp. Metastasis** 2020, 37, 649–656, doi: 10.1007/s10585-020-10058-8

authors contributed equally as first authors to this work.

Koch, C.; Kuske, A.; Joosse S. A.; Yigit, G.; Sflomos, G.; Thaler, S.; **Smit, D.J.**; Werner, S.; Borgmann, K.; Gärtner, S.; Mossahebi Mohammadi, P.; Battista, L.; Cayrefourcq, L.; Altmüller, J.; Salinas-Riester, G.; Raithatha, K.; Zibat, A.; Goy, Y.; Ott, L.; Bartkowiak, K.; Tan, T. Z.; Zhou, Q.; Speicher, M.R.; Müller, V.; Gorges, T. M.; Jücker, M.; Thiery, J.-P.; Briskin, C.; Riethdorf, S.; Alix-Panabières, C.; Pantel, K. *Characterization of circulating breast cancer cells with tumorigenic and metastatic capacity*. **EMBO Mol. Med.** 2020, 12, e11908. doi: 10.15252/emmm.201911908

Haider, M.-T.; **Smit, D.J.**; Taipaleenmäki, H. *The Endosteal Niche in Breast Cancer Bone Metastasis*. **Front. Oncol.** 2020, 10:335. doi: 10.3389/fonc.2020.00335

Zarrer, J.; Haider, M.-T.; **Smit, D.J.**; Taipaleenmäki, H. *Pathological Crosstalk between Metastatic Breast Cancer Cells and the Bone Microenvironment*. **Biomolecules** 2020, 10, 337. doi: 10.3390/biom10020337

Schulte, A.; Ewald, F.; Spyra, M.; **Smit, D.J.**; Jiang, W.; Salamon, J.; Jücker, M.; Mautner, V.-F. *Combined Targeting of AKT and mTOR Inhibits Proliferation of Human NF1-Associated Malignant Peripheral Nerve Sheath Tumour Cells In Vitro but not in a Xenograft Mouse Model In Vivo*. **Int. J. Mol. Sci.** 2020, 21, 1548. doi: 10.3390/ijms21041548

Gerloff, R.; Weiß, A.; Lammert, A.; Schermuly, R.; **Smit, D.J.**; Jücker, M.; Giehl, K. *Characterization of AKT isoform-specific signaling in lung cancer cells*. Abstract submission for the **23rd Meeting on Signal Transduction** "Trends in Cancer and Infection" on 04.11.2019, Weimar (Germany).

9. Eidesstattliche Versicherung

Ich versichere ausdrücklich, dass ich die Arbeit selbständig und ohne fremde Hilfe verfasst, andere als die von mir angegebenen Quellen und Hilfsmittel nicht benutzt und die aus den benutzten Werken wörtlich oder inhaltlich entnommenen Stellen einzeln nach Ausgabe (Auflage und Jahr des Erscheinens), Band und Seite des benutzten Werkes kenntlich gemacht habe.

Ferner versichere ich, dass ich die Dissertation bisher nicht einem Fachvertreter an einer anderen Hochschule zur Überprüfung vorgelegt oder mich anderweitig um Zulassung zur Promotion beworben habe.

Ich erkläre mich einverstanden, dass meine Dissertation vom Dekanat der Medizinischen Fakultät mit einer gängigen Software zur Erkennung von Plagiaten überprüft werden kann.

Unterschrift: